

# Sennheiser SP 10 Speakerphone

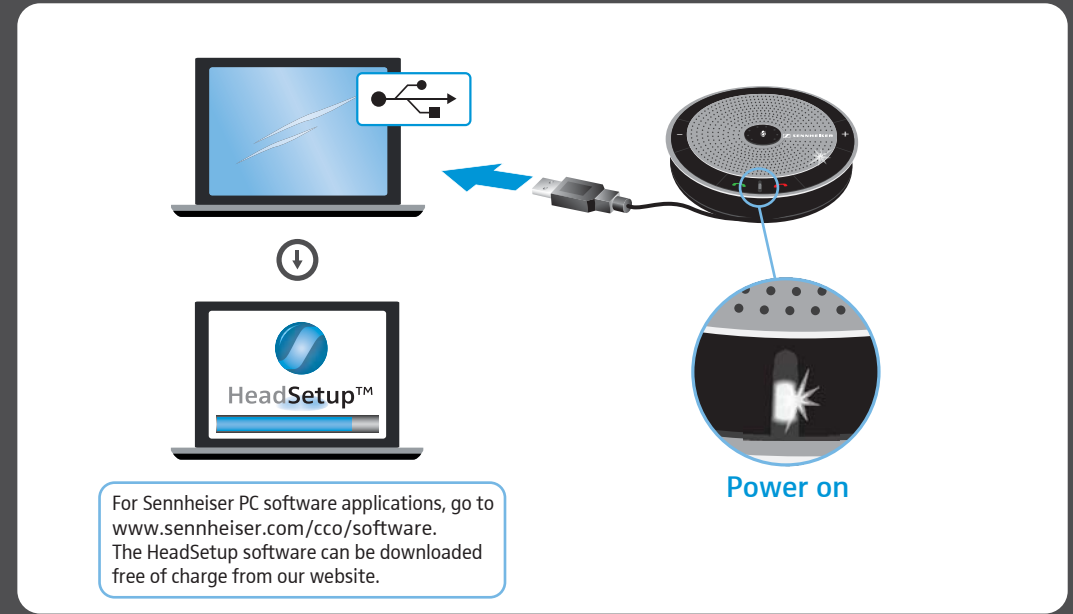
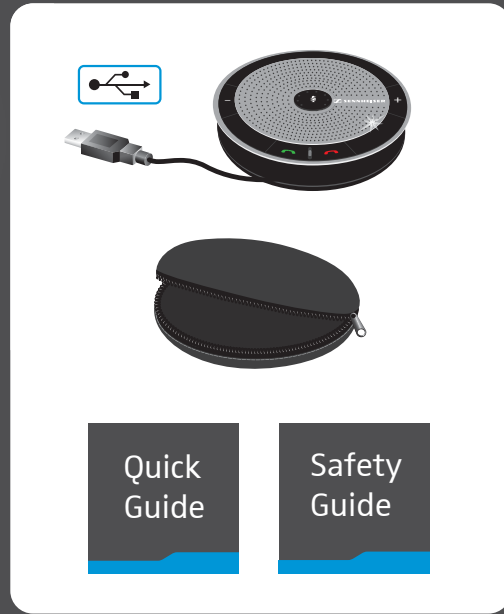


Quick Guide  
Kort vejledning  
Kurzanleitung  
Instrucciones resumidas  
Guide rapide  
Istruzioni brevi  
Beknopte gebruiksaanwijzing  
Krótka instrukcja obsługi



Package contents | Leveringsomfang | Lieferumfang | Volumen de suministro | Contenu | Dotazione | Omvang levering | Zakres dostawy

Connecting the speakerphone | Tilslutning af speakerphone | Speakerphone anschließen | Conexión del altavoz manos libres | Raccorder le speakerphone | Collegamento dello speakerphone | Speakerphone aansluiten | Podłączenie zestawu głośnomówiącego



For Sennheiser PC software applications, go to [www.sennheiser.com/cco/software](http://www.sennheiser.com/cco/software). The HeadSetup software can be downloaded free of charge from our website.

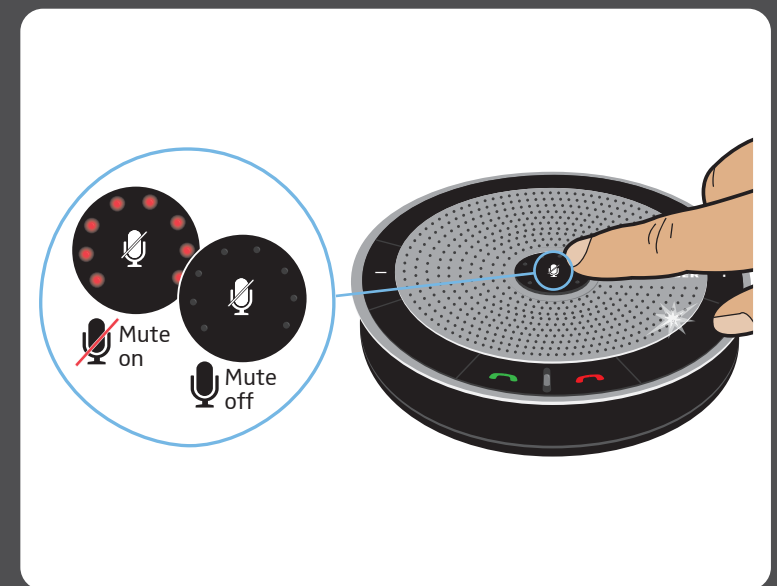
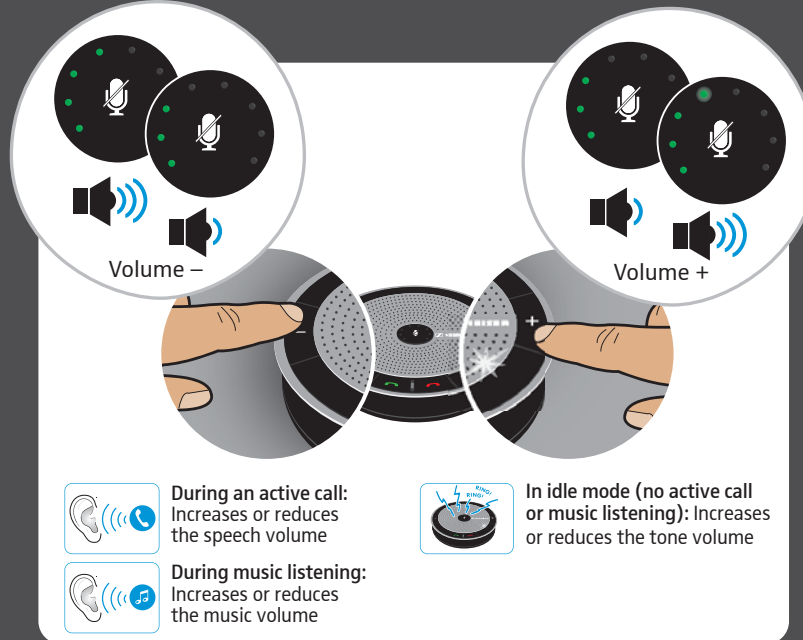
Power on



[www.sennheiser.com/cco/support](http://www.sennheiser.com/cco/support)

Adjusting the volume | Indstilling af lydstyrken | Lautstärke einstellen | Ajustar el volumen | Réglage du volume | Regolazione del volume | Het volume instellen | Regulacja głośności

Muting the microphone | Frakobling af lyd på mikrofon | Mikrofon stumm schalten | Silenciar el micrófono | Activation du mode silencieux du microphone | Silenziamento del microfono | Microfoon op mute schakelen | Wyciszenie mikrofonu



Sennheiser Communications A/S  
Industriparken 27, DK-2750 Ballerup, Denmark  
[www.sennheiser.com](http://www.sennheiser.com)

Printed in China, Publ. 01/14, A02

Using the speakerphone | Brug af speakerphone | Speakerphone verwenden | Uso del altavoz manos libres | Utiliser le speakerphone | Utilizzo dello speakerphone | Speakerphone gebruiken | Stosowanie zestawu głośnomówiącego

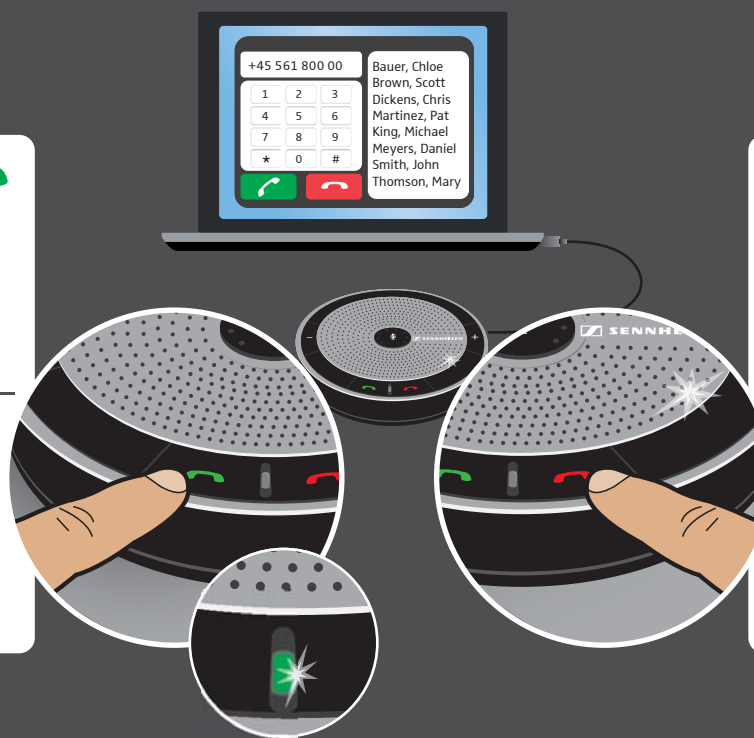
## Call control features

- Accepts/Initiates a call
- Redials the last number
- Puts an active call on hold

**Managing multiple calls**

call 1 call 2

- Accepts the incoming call and puts an active call on hold
- Swaps between the held and active call



- Ends a call
- Rejects a call

**Managing multiple calls**

call 1 call 2

- Rejects the incoming call and continues the active call

incoming call/  
active call

