

Specifications

Model Number

UB-5865



Stand is optional.

UB-5365



Stand is optional.

General		
Power Supply	AC 100 - 120 V / AC 220 - 240 V, 50/60 Hz	
Power Consumption	Active Mode: 70W [AC 100 - 120 V: 1.4A / AC 220 - 240 V: 0.7A] / Ready Mode: 3W / Off Mode: 0.5W	
External Dimensions* <sup>1</sup> (H x W x D, without stand)	1,372 x 1,828 x 212 mm [54.0 x 72.0 x 8.3 in.]	1,372 x 1,465 x 212 mm [54.0 x 57.7 x 8.3 in.]
Weight* <sup>1</sup> (without stand)	32 kg (70.5 lbs)	29 kg (63.9 lbs)
Operating Environment	Temperature: 10 – 35°C (50 – 95°F), Humidity: 30 – 80 % RH	
Input Block		
Panel Dimensions* <sup>1</sup> (H x W)	900 x 1,625 mm [35.4 x 64.0 in.]	900 x 1,262 mm [35.4 x 49.7 in.]
Number of Sheets	2 [endless type]	
Copying Area* <sup>1</sup> (H x W)	850 x 1,613 mm [33.5 x 63.5 in.]	850 x 1,250 mm [33.5 x 49.2 in.]
Scanning Resolution [A4]	Standard-size: 36 dpi x 36 dpi, Full-size: 43 dpi x 36 dpi	Standard-size: 44 dpi x 44 dpi
Time Required for Scanning	Approx. 15 s/sheet	
Scanning System	CIS (Contact Image Sensor)	
Printer Output Block		
Printing System	Fusion thermal transfer type	
Copy Paper	Standard / Recycled paper (60 - 90 g/m <sup>2</sup> / 16 - 24 lbs)	
Copy Paper Size	A4	
Copy Density	8 dots/mm	
Copy Colour	Monochrome	
Time Required for Copying	20 s/sheet	
Continuous Copies	1 to 9	
Contrast Adjustment	Two levels: Normal / Dark	
2-Screen Compressed Copying	Yes	
Memory Output Block		
Supported Memory Type	USB Flash Memory Device [Sold separately]	
USB Interface	Full Speed USB 2.0 [A-type connector]	
Supported Formats	FAT(FAT16)/FAT32 [up to 32 GB]	
Storage File Formats	TIFF, PDF	
Storage File Colour	Monochrome	
System Requirements		
Computer	IBM® PC/AT or compatible machine	
CPU	Intel® Pentium II or higher processor	
Interface	Full Speed USB 2.0 [B-type connector]	
Operating System	Windows® XP (SP3 or later), Windows Vista®, Windows® 7, Windows® 8	
Included Accessories and Consumables		
	2 Black Markers / Eraser / Thermal Transfer Film (starter roll) / Power Cord / USB cable / Lithium Battery / Operating Instructions / Installation Manual	
Optional Accessories		
Stand	UE-608005	
Replacement Film	UG-6001 [2 rolls, 50 m (164.0 ft.)]	
Markers	KX-B031 (10 black markers) / KX-B032 (10 red markers) / KX-B033 (10 blue markers)	
Erasers	KX-B042 [6 erasers]	
Marker and Eraser Set	KX-B035 [1 black, 1 red, 1 blue, 1 eraser]	

\*1 Dimensions and weights are approximate.

Trademarks and registered trademarks

- Microsoft Windows and Windows Vista are registered trademarks of Microsoft Corporation in the United States and/or other countries.
- IBM is a trademark of International Business Machines Corporation in the United States, other countries, or both.
- Intel and Pentium are trademarks of Intel Corporation in the U.S. and other countries.

Important

- Safety Precaution: carefully read the operating and installation instructions before using this product.

Design and specifications are subject to change without notice.  
All photographs in this brochure are simulated.

This product is designed to reduce hazardous chemical substances to meet the RoHS directive.

DISTRIBUTED BY :

Panasonic

Electronic Whiteboard: <http://panasonic.net/pcc/eboard/>

Panasonic  
ideas for life

Electronic Whiteboard

UB-5865

UB-5365



Beautifully functional.

- ▶ Panaboard Overlayer Software\* Compatibility  
\*Available for downloading from our website.
- ▶ PC/USB Memory Device Function
- ▶ An Elegant Metallic Design with a Sleek, Low-Profile Body
- ▶ User Friendly Interface
- ▶ Energy-Saving Design



UB-5865



UB-5365



# Talk More! — No More Memos!

Put an end to meetings where everyone has to take notes, written on whiteboard. The Panasonic electronic whiteboards with built-in printer allow you to simply print your notes or directly save them as a PDF/TIFF on PC or USB flash memory device. This makes meetings more efficient by eliminating the time spent on handwriting notes. The low-profile whiteboard body saves space, and the control panel is easy to use. The metal frame also adds to the elegance of the meeting room with its functional beauty. Plus, the Panasonic electronic whiteboards are designed to consume as little energy as possible, even when the unit is in Ready Mode.



## Panaboard Overlayer Software\* Compatibility

### Share and Save Meeting Notes with a PC and Projector

Panaboard Overlayer Software\* allows you to utilise a projector to display information from your PC onto the whiteboard, while allowing you to write notes on the board. When the meetings finished, you can save these handwritten notes from the electronic whiteboard to your PC, which can then be merged with the projected image displayed from your PC as a PDF/TIFF file. Documents created with Panaboard Overlayer Software can then be easily distributed to all meeting participants, eliminating the need for handwritten notes.



\*Panaboard Overlayer Software can be downloaded from the following website.  
<http://panasonic.net/pcc/support/eboard/download/metallicsoft.html>

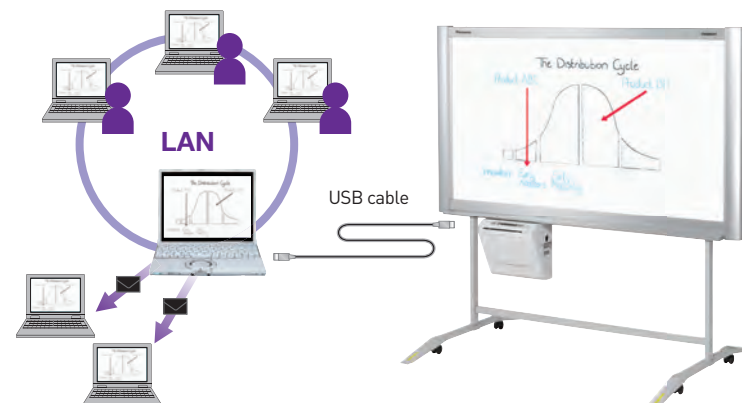
**[System Requirements]**  
Operating System: Windows® XP SP3 or later / Windows Vista® SP2 or later / Windows® 7 SP1 or later / Windows® 8 (Windows® XP 64-bit edition is not supported.)  
Web Browser: Internet Explorer 6.0 or later

## PC/USB Memory Device Function

### Save Data Directly onto a PC or USB Flash Memory for Efficient File Sharing

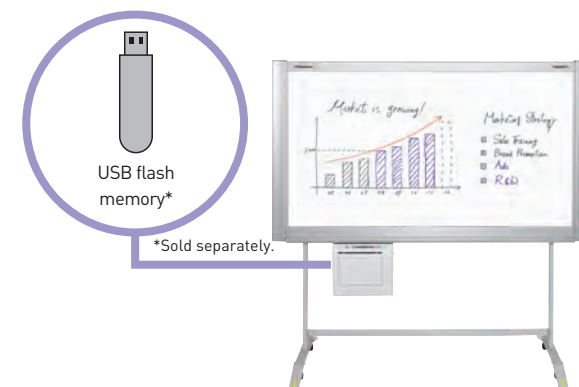
#### Scan and Save onto a PC

Save handwritten notes from the whiteboard directly onto a PC by simply using a USB cable to connect the whiteboard to a PC. No software or device drivers required.



#### Scan and Save onto a USB Flash Memory

You can digitally save information written onto the whiteboard directly to a USB flash memory device.

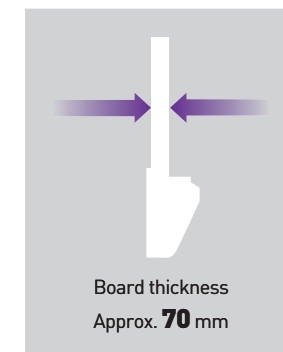


## Metallic Design with Sleek, Low-Profile Body

### Approximately 70 mm Thick for Easy Wall Mounting

The UB-5865 / UB-5365 Electronic Whiteboard is designed to blend nicely with any office interior with its low-profile body. This slim board, which is approximately 70 mm thick, allows for easy wall mounting. And the metal frame makes office spaces even more elegant.

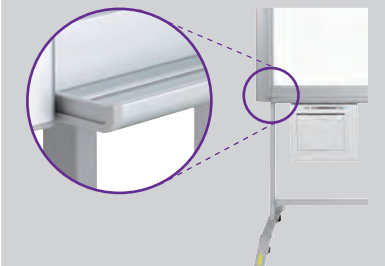
#### Slim board



#### +Plus

##### Soil-resistant Pen Tray

The pen tray is made of aluminium, which prevents the adherence of soiling from pens.

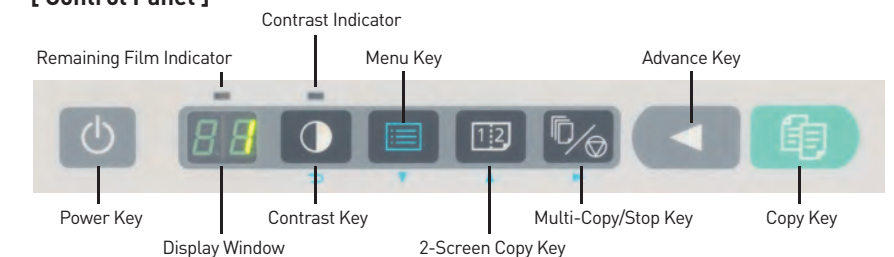


## User Friendly Interface

### All Controls Are Accessible via the Control Panel

The large control panel of the UB-5865 / UB-5365 is designed for maximum ease of use. The power key is also located on the control panel, making all operations possible right from the panel.

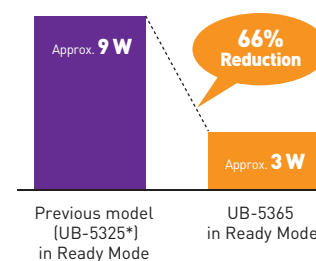
#### [ Control Panel ]



## Energy-Saving Design

### Ready Mode

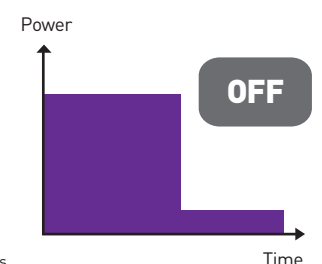
The power consumed during standby has been reduced by 2/3 compared with our previous models.



\*The UB-5325 was introduced in August 2004.

### Auto Power Off function\*

The power automatically turns off if the unit is not used for approximately one hour after being in Ready Mode. This helps reduce energy costs, even if the last person forgets to turn the power off.



\*Approximately 0.5 W of electricity is consumed even if the power is turned off. The Auto Power Off function can be disabled by the key operator. Also, certain device conditions may prevent the Auto Power Off feature to be activated.