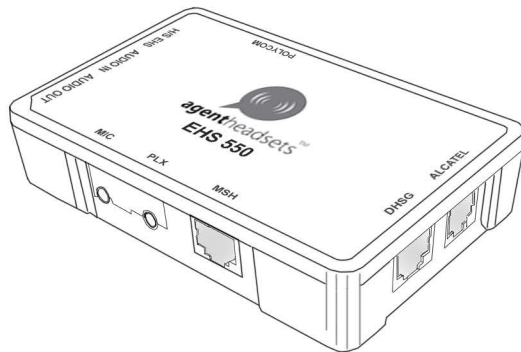


Agent EHS 550

DECT Connection Box

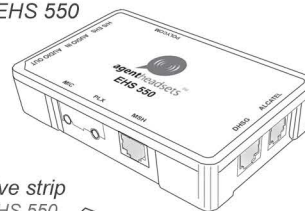
SET-UP GUIDE 1



For use with Aastra deskphones:
5370, 5380, 6771, 6773, 6775, 7434, 7444

What's in the box:

Agent EHS 550



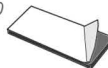
Cable A



Cable D



Adhesive strip
(to fix EHS 550
to your desk)



You will also need:

Aastra
deskphone



Agent W860
or W880



Cable B
(supplied with your
Agent W860 or
W880)



Compatibility guide:

The EHS 550 is compatible with all Aastra models listed in the table below.
Please check which set-up guide you need for the Aastra model you're using:

USE SET-UP GUIDE 1 FOR

- 6773 Standard and IP
- 6775 Standard and IP
- 6771
- 5370 Standard and IP
- 5380 Standard and IP

USE SET-UP GUIDE 2 FOR

- 7434 IP
- 7444 IP
- 6735i
- 6737i
- 6739i
- 6753i
- 6755i
- 6757i

Other manufacturers:

Other versions of this product are available for the following manufacturers:

Alcatel



Avaya



Panasonic



Polycom



Siemens



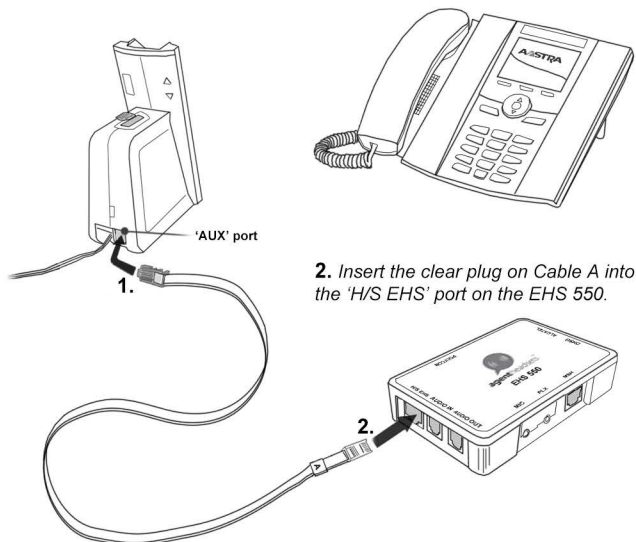
Toshiba



To check which handsets from each manufacturer are compatible,
please visit the accessories section of our website: www.agentheadsets.com

Step 1: Connect Cable A

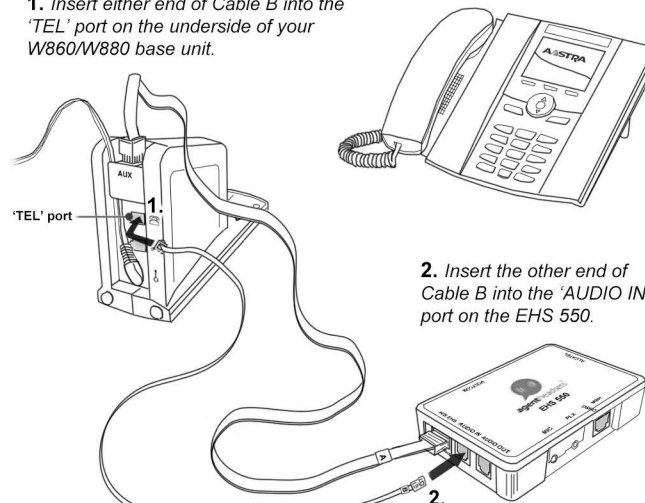
1. Insert the blue plug on Cable A into the 'AUX' port on the back of your W860/W880 base unit.



Step 2: Connect Cable B

Cable B is supplied with your Agent W860 or W880.

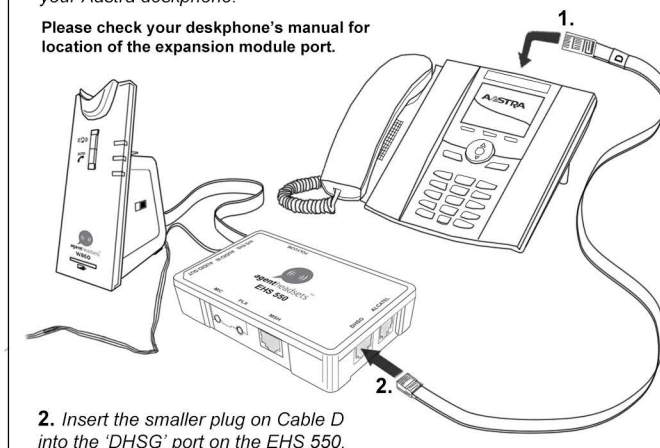
1. Insert either end of Cable B into the 'TEL' port on the underside of your W860/W880 base unit.



Step 3: Connect Cable D

1. Insert the larger plug on Cable D into the expansion module port on your Aastra deskphone.

Please check your deskphone's manual for location of the expansion module port.



Your EHS 550 will now be ready for use with your Agent W860 or W880 and Aastra deskphone. If you encounter any problems setting up or operating your products, please call Agent headsets on 0845 873 8085.