



ALWAYS MORE
THAN YOU EXPECT

Elite **Panaboard**

UB-T580/UB-T580W

TOUCH SENSITIVE BOARD
DYNAMIC IMAGE CONTROL
USB POWERED

CREATE A NEW TYPE OF LESSON WITH THE UB-T580/UB-T580W ELITE PANABOARD

The elite Panaboard is an advanced educational tool that helps you grab students' attention. It makes it easy to create effective, eye-catching teaching materials and promotes active, visual-based teaching and learning that make the classroom fun for both teacher and students. By connecting a PC with Internet access and a projector, you can incorporate live web content into your lesson, and even manipulate and save PC files on the board. Panasonic's elite Panaboard helps classroom interactivity make the grade.

OPERATE WITH A FINGER OR THE STYLUS PEN

All board operations can be performed with the touch of a finger, and your finger's movement is relayed directly to the board surface for smooth, comfortable operation. Or you can use the stylus pen for writing characters for instance. The stylus pen works without batteries.



DUAL OPERATION DYNAMIC IMAGE CONTROL

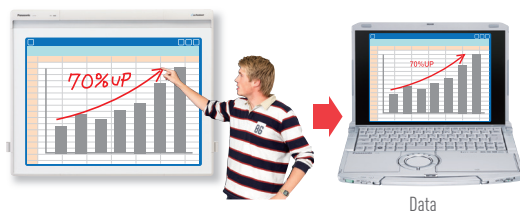
Images can be easily moved, scaled and rotated with your fingers.



*When using Windows 7 and applications that support Multi Touch.

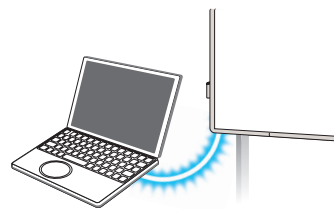
INK NOTE EASILY SAVE INFORMATION WRITTEN ON THE BOARD

You can insert images and text into Microsoft® Word, Excel®, or PowerPoint® using elite Panaboard Software.



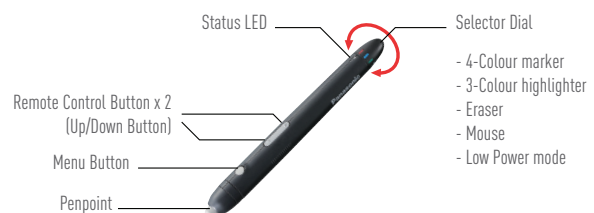
USB POWERED EASY-TO-WIRE

Power is supplied by a USB cable from the PC, so there's no need to connect a power cord from the elite Panaboard to a wall outlet.



MULTIFUNCTIONAL ELECTRONIC PEN (OPTIONAL) STREAMLINE YOUR LESSONS

You can use the Electronic Pen to switch between four marker colours and the eraser tool, and do things like remotely turn PowerPoint® pages. This helps to keep the students' attention because you don't need to stop the flow of the lesson.



EASITEACH SOFTWARE

SOFTWARE FOR CREATING CLASS MATERIALS

Elite Panaboard comes with a complete tool for creating and editing teaching materials.

MOTIVATIONAL

Easiteach enables users to create personalised lessons and resources from scratch as well as access a wide range of curriculum-relevant content that can be used or adapted to suit your own needs.

ENGAGING

Both teachers and students can use Easiteach to create multi-modal activities that can include animation, video, sound, text, numbers and hyperlinks all on one page.

PRACTICAL

The product's easily accessible toolbars and widgets allow you to work quickly in creating whole-class teaching activities to fit with your learning objectives. Common File Format (CFF) files can then be imported and opened, edited and saved across many different whiteboard applications so that content can be exchanged between establishments.



Media Bank



Register Sound & Video



Useful Widgets Bank



Intuitive Tool Bars

KEY FEATURES:

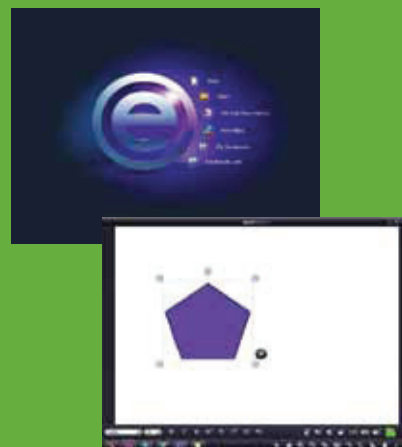
- Multi-language and multi-device
- Media bank with over 4,800 resources including over 70 videos
- Text-to-speech capabilities
- Handwriting and shape recognition
- Widget bank with more than 30 widgets
- Easily-accessible toolbars
- Language tools e.g. close tool, remove punctuation and word wallet
- A range of content that comes as standard including templates, lesson aids and activities
- Activities can be saved as jpegs, pdfs or Common File Format (.iwb files)

For more information visit www.easiteach.com

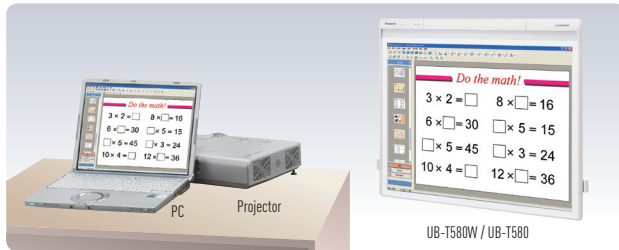
Minimum System Requirements:

OS Standalone computers using Windows XP SP3 (32 Bit), Windows Vista (32 or 64 Bit) or Windows 7 (32 or 64 Bit), Processor 1.8GHz+, Memory 512Mb, Storage 100Mb, Graphics card 64Mb, Screen 1024x768

Prerequisites: Microsoft .Net Framework 3.5 SP1, Flash Player v10 for non-Internet Explorer browsers, Windows Media Player 11 or above



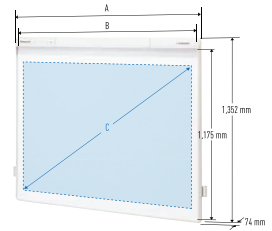
SYSTEM



The UB-T580W / UB-T580 does not include a PC or a projector.

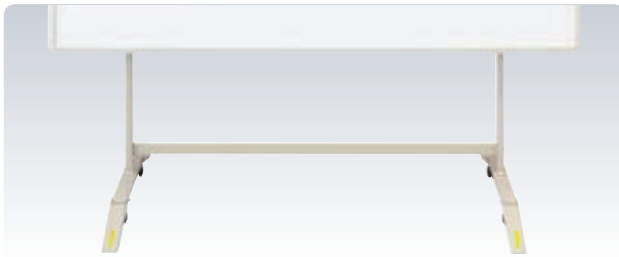
DIMENSIONS

	UB-T580W	UB-T580
A	1,915 MM	1,637 MM
B	1,860 MM	1,582 MM
C	2,175 MM (86-INCH) 10 : 16 2,113 MM (83-INCH) 9 : 16	1,958 MM (77-INCH) 3 : 4



OPTIONS

Plain Stand (KX-B061-A) * This stand cannot accept a projector arm.



Electronic Pen (UE-608020)



COMPLETE PANASONIC EDUCATION SOLUTIONS PACKAGE INCLUDES:

Height Adjustable Stand



Compatible with most of today's (ultra) short throw projectors. To be installed on the wall or on a mobile stand. Additional writing space: optional, dual-sided magnetic whiteboard writing surfaces.

Interactive Tablets



For students to enter/modify data without coming to the front of the class.

Voting Systems



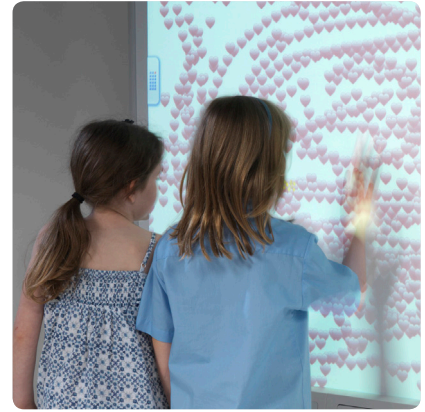
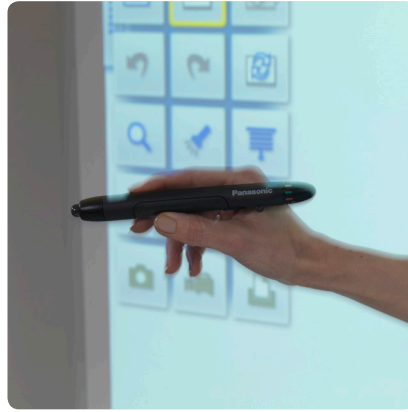
Encourage student participation, while benefitting from an instantaneous evaluation.

Sound Systems



Provides crystal-clear audio from anywhere in the classroom.



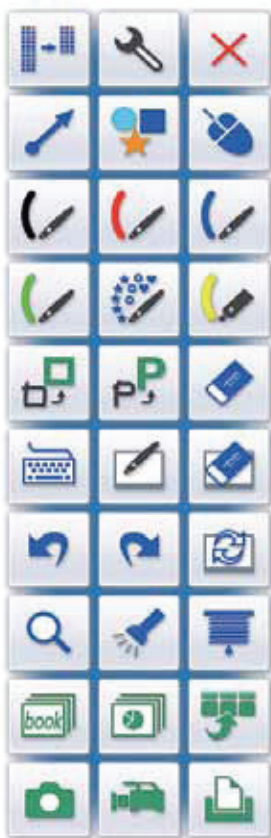


ELITE PANABOARD SOFTWARE

Panaboard has a wide range of tools, ranging from basic pens and erasers to special-effect functions, that make class more exciting and enjoyable.

FUNCTION MENU

In addition to drawing tools, Panaboard has a variety of special-effect functions that attract students' attention, as well as recording functions.



WRITE OR DRAW MORE INFORMATION

Multi-page White Background

The software includes a total of ten white backgrounds. When you want to move on to another subject during the class, you can just start writing the new information on another white background, without having to erase the previous information.

DIVERSE APPLICATIONS

Screen Shade

The sliding shade can conceal a part of the screen or the entire display. One typical use is to cover up the answer or explanation while students try to answer a question or solve a problem.

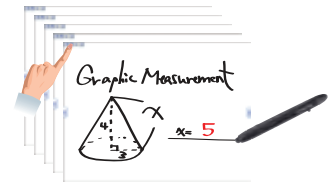
SAVING LESSONS AS MOTION IMAGES

Recorder

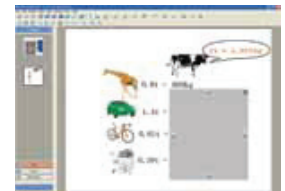
With this function, you can record the entire screen or any part of it that you designate. It is convenient for recording lessons for later review. If you connect a microphone to the PC, you can also record voices simultaneously.

Other Main Functions

- Capture
- Slide Show
- On-Screen Keyboard
- Application Launcher (Desktop Info Camera, Voting System, Teleconference System)
- Magnifier
- Spotlight
- Shape Recognition
- Print
- Text Recognition



Up to 10 Pages



UB-T580/UB-T580W SPECIFICATIONS

MAIN BODY	POWER	Supplied USB bus
SHELF DIMENSIONS	POWER CONSUMPTION	Less than 2.5 W (500 mA, 5 V)
	OPERATING ENVIRONMENT	Temperature: 10 – 35°C (50 – 95°F), Humidity: 30 – 80 %
	EXTERNAL DIMENSIONS (HEIGHT X WIDTH X DEPTH)	UB-T580W: 1,352 x 1,915 x 74 mm (4 ft. 5 1/4 in. x 6 ft. 3 3/8 in. x 2 15/16 in.) UB-T580: 1,352 x 1,637 x 74 mm (4 ft. 5 1/4 in. x 5 ft. 4 7/16 in. x 2 15/16 in.)
	SCREEN BOARD SIZE (HEIGHT X WIDTH)	UB-T580W: 1,175 x 1,860 mm (3 ft. 10 1/4 in. x 6 ft. 1 1/4 in.) UB-T580: 1,175 x 1,582 mm (3 ft. 10 1/4 in. x 5 ft. 2 5/16 in.)
	EFFECTIVE AREA (HEIGHT X WIDTH)	UB-T580W: 1,153 x 1,845 mm (3 ft. 9 3/8 in. x 6 ft. 5/8 in.) (10:16, 86-inch diagonal) 1,037 x 1,845 mm (3 ft. 4 13/16 in. x 6 ft. 5/8 in.) (9:16, 83-inch diagonal) UB-T580: 1,175 x 1,567 mm (3 ft. 10 1/4 in. x 5 ft. 1 11/16 in.) (3:4, 77-inch diagonal)
	WEIGHT (WITHOUT STAND)	UB-T580W: 26 kg (57.3 lbs) UB-T580: 23 kg (50.7 lbs)
	PANEL SURFACE	Hardcoated Metal Board
	POSITION SENSOR	Reflective Type Touch Sensor
	PEN HOLDER	Maximum 2 pens
INTERACTIVE FUNCTIONS	INTERFACE	USB 2.0 A Type (for PC)
ELECTRONIC PEN (OPTIONAL DEVICE)	TRANSMISSION SYSTEM	Infrared Rays Sensor
	ELECTRONIC PEN POWER	LR03 (AAA alkaline dry cell battery) x 1
ACCESSORIES	Operating Instructions x 1, Stylus Pen x 1, Software DVD-ROM x 1, Wall Mounting Plate (Left, Right) x Total 2, Pen Holder x 2	
OPTIONAL DEVICES	Stand [KX-B061-A], Electronic Pen [UE-608020], Stylus Pen [UE-608021], Pen point [UG-6020]	

ELITE PANABOARD SOFTWARE SPECIFICATIONS

SYSTEM REQUIREMENTS	COMPUTER	IBM® PC/AT compatible with a DVD-ROM drive, Web browser Mac® computer with an Intel processor, Web browser
	CPU	Intel® Pentium® 4 processor or later
	INTERFACE	USB 2.0
	OPERATING SYSTEM	Windows XP SP3 or later / Windows Vista SP2 or later / Windows 7 (Windows® 7 Starter, Windows® 7 home basic and Windows XP 64-bit edition are not supported). Mac OS® X version 10.5.8, 10.6.8 or 10.7.1*
	MEMORY	Windows: 1 GB or more Mac OS X: 2 GB or more
	HARD DISK	At least 700 MB free space (except saving space for data file) (An additional 700 MB may be required when installing Microsoft .Net framework.)

To run the elite Panaboard software/book, additional software may be needed. The system requirements above do not meet the recommended specifications of all operating systems.

Restrictions

- The handwriting and shape recognition features are not supported in Windows Vista Home Basic, or Windows XP Home Edition.
- The ability to import drawing data from other applications, and the ability to save a slide's drawing data to a PowerPoint file are available in Office XP, Office 2003, and Office 2007, Office 2010 (The 64-bit version is not supported.).

For detailed information, please access the following URL. <http://panasonic.net/pcc/support/eboard/elite/download.html>

* Software for use with the Mac OS can be downloaded from our website:
www.panasonic.co.uk/education

Panasonic

ideas for life

Panasonic System Networks Europe
Panasonic House, Willoughby Road
Bracknell, Berkshire RG12 8FP

3013 Lake Drive
Citywest Business Campus
Dublin 24

0844 844 3888
www.panasonic.co.uk/education

We expressly reserve the right to make reasonable changes to models, dimensions, colours as well as to make modifications that bring our products in line with state-of-the-art technology.