



Jabra[®]

Jabra[®] PRO[™]
9460, 9460-Duo and 9470

User manual

www.jabra.com

CONTENTS

1. INTRODUCTION	6
2. IMPORTANT SAFETY INFORMATION	7
2.1 READ THE SAFETY BOOKLET	7
2.2 PROTECTING YOUR HEARING WITH SAFETONE™	7
2.3 CARE AND MAINTENANCE	8
2.4 OTHER SPECIFICATIONS.....	8
3. PRODUCT OVERVIEW	9
3.1 PACKAGE CONTENTS	9
3.2 OPTIONAL ACCESSORIES	10
3.3 HEADSET DIAGRAMS.....	11
3.4 BASE DIAGRAM.....	13
4. SYSTEM SETUP AND CONNECTIONS	14
4.1 SETUP OVERVIEW AND BACKGROUND.....	14
4.2 THE QUICK-START SETUP WIZARD	15
4.3 PREPARING THE BASE AND ASSEMBLING THE HEADSET.....	15
4.4 CONNECTING THE BASE TO YOUR DESK PHONE.....	17
4.5 CONFIGURING THE JABRA PRO BASE FOR YOUR DESK PHONE	19
4.6 USING A HANDSET LIFTER OR ELECTRONIC HOOKSWITCH.....	21
4.7 CONNECTING THE BASE TO YOUR COMPUTER.....	22
4.8 CONNECTING JABRA PRO 9470 TO A MOBILE PHONE	23
4.9 USING A REMOTE ONLINE INDICATOR	23

5.	INSTALLING AND RUNNING THE JABRA PC SUITE	24
5.1	JABRA PC SUITE FEATURES	24
5.2	INSTALLING THE JABRA PC SUITE.....	24
5.3	JABRA PC SUITE DOCUMENTATION.....	24
5.4	FIRMWARE UPDATES.....	24
5.5	CENTRAL ADMINISTRATION AND MASS DEPLOYMENT	24
6.	DAILY USE — CALLING, ANSWERING AND HANGING UP	25
6.1	HEADSET CONTROLS AND INDICATORS.....	25
6.2	THE TARGET PHONE CONCEPT	25
6.3	HOW TO MAKE A CALL.....	26
6.4	HOW TO ANSWER A CALL	28
6.5	HANGING UP.....	29
6.6	CONTROLLING THE SPEAKER VOLUME AND MICROPHONE.....	30
6.7	SWITCHING BETWEEN YOUR PHONE AND HEADSET.....	30
6.8	LAST NUMBER REDIAL.....	31
6.9	MANAGING CALL COLLISIONS AND CALL WAITING.....	31
6.10	LISTENING TO MUSIC.....	31
7.	THE JABRA PRO HEADSET	32
7.1	HOW TO WEAR THE HEADSET	32
7.2	ATTACHING OR DETACHING A WEARING STYLE.....	33
7.3	HEADSET CONTROLS AND SIGNALS.....	35
7.4	BATTERY INDICATORS, RECHARGE AND REPLACEMENT.....	40
7.5	STAYING WITHIN RANGE.....	41
7.6	NOISE BLACKOUT™ MICROPHONE (JABRA PRO 9470)	41
7.7	NOISE-CANCELLING MICROPHONE (JABRA PRO 9460 AND 9460-DUO)	41

8. THE JABRA PRO TOUCHSCREEN BASE.....	42
8.1 BASE CONNECTIONS AND SETUP.....	42
8.2 USING THE TOUCHSCREEN.....	42
8.3 STANDARD OPERATION.....	43
8.4 PAIRING AND CONNECTING THE BASE AND HEADSET.....	43
8.5 SETTING ACTIVE CALL AND AUDIO PREFERENCES.....	44
8.6 MANAGING CALL COLLISION.....	45
8.7 MANAGING CALL WAITING.....	46
8.8 SETTING GENERAL USER PREFERENCES.....	48
8.9 RE-RUNNING THE SETUP WIZARDS.....	49
8.10 BASE AUDIO INDICATORS.....	49
8.11 NARROWBAND VS. WIDEBAND AUDIO.....	49
8.12 CONFERENCE CALLING.....	50
8.13 HEADSET DOCKING-OPERATION.....	50
8.14 THEFT PROTECTION.....	50
8.15 DEALING WITH DENSITY ISSUES.....	51
9. USING JABRA PRO 9470 WITH A MOBILE PHONE.....	52
9.1 JABRA PRO BLUETOOTH SUPPORT.....	52
9.2 PAIRING AND CONNECTING WITH OTHER BLUETOOTH DEVICES.....	53
9.3 FORCING RECONNECTION/DISCONNECTION VIA THE TOUCHSCREEN.....	54
10. RECORDING YOUR CALLS.....	56
11. FAQs AND TROUBLESHOOTING.....	57
12. GETTING ASSISTANCE.....	60
12.1 EUROPE.....	60
12.2 USA AND CANADA.....	60
12.3 ASIA/PACIFIC.....	60

13. TECHNICAL SPECIFICATIONS 61

13.1 ALL JABRA PRO HEADSETS.....61

13.2 JABRA PRO MIDI HEADSET61

13.3 JABRA PRO FLEX HEADSET62

13.4 JABRA PRO 9460-DUO HEADSET62

13.5 HEADSET HEARING PROTECTION.....62

13.6 HEADSET BATTERY62

13.7 MATERIALS AND ALLERGIES63

13.8 TOUCHSCREEN BASE63

13.9 JABRA PRO 9470 BASE BLUETOOTH SUPPORT64

13.10 PRODUCT DISPOSAL64

13.11 CERTIFICATIONS AND SAFETY APPROVALS.....64

14. GLOSSARY 65

1. INTRODUCTION

Thank you for selecting a Jabra PRO™ headset. We are sure that you will enjoy its wide range of features and find it comfortable to wear and easy to use.

Jabra PRO headsets are available in a wide range of configurations, including several different headset designs, wearing styles, connectivity options and control features. All of the models in the Jabra PRO family feature a DECT-based wireless headset and base station. They all share hands-free working efficiency, wireless mobility, and many customization and accessory options.

All Jabra PRO headsets feature a dual Noise Blackout™ or single noise-cancelling microphone, one or two speakers, easy-to-use controls and wireless communication. The headset is very lightweight and sits next to your ear, with the microphone extended towards your mouth by a short boom arm. Several wearing styles are available, including ear hook, headband, neckband and/or dual-mono; the options available to you will depend on which model you have purchased.

The Jabra PRO Touchscreen Base connects to your desk telephone and PC and manages the wireless link to your headset; it also recharges the headset battery while you are not using it. The touchscreen makes it easy to view information, connect to your various phones, configure the solution and more. The Jabra PRO 9470 Base also features Bluetooth, so it can connect to your mobile phone too.

This manual describes the Jabra PRO 9460, 9460-Duo and 9470 headset solutions. Model differences, where they exist, are noted in this document.

Jabra PRO Headset Features

All Jabra PRO headsets described in the manual provide the following:

- Range from base to headset up to 150m
- Wideband audio for extra audio quality (when also supported by the connected phone)
- Touch-panel volume and mute control
- Intuitive headset control via adaptive multifunction button for answer/end call, call-waiting control and other functions
- Status LED and audio feedback
- Advanced hearing protection with SafeTone™ noise-exposure controls

The Jabra PRO 9460 headset also features the following:

- Jabra PRO Flex boom design
- Single noise-cancelling microphone
- Choice of ear-hook or headband wearing style (neckband also available as an accessory)

The Jabra PRO 9460-Duo also features the following:

- Jabra PRO Flex boom design
- Single noise-cancelling microphone
- Headband wearing style with a speaker for each ear (dual mono, which means that the same signal comes out of both speakers)

The Jabra PRO 9470 headset also features the following:

- Jabra PRO Midi boom design
- Dual Noise Blackout™ microphones
- Choice of ear-hook, headband or neckband wearing style

Jabra PRO Touchscreen Base Features:

- 2.4" color touchscreen
- Touchscreen-guided set up of desk phone, mobile phone and PC connections
- Touchscreen control of calls and connections to all connected phones (including desk phone, mobile phone and/or soft phone)
- Desk phone support, with optional electronic-hookswitch support for selected phones (for remote desk phone operation using the headset)
- Bluetooth support (Jabra PRO 9470 only) links the base to your mobile phone. Supports both the standard headset Bluetooth profile and the more advanced hands-free profile to provide voice-activated dialing (depending on mobile phone model)
- Advanced softphone support and control
- On-screen caller ID (mobile phones and soft phones only)
- Wideband audio for extra audio quality (when also supported by the connected phone)
- Headset recharge cradle
- Call-waiting control (for managing multiple calls to your softphone or mobile phone)
- Call-collision control (for managing multiple calls to different phones, such as desk and soft phones)
- Mass-deployment features enable IT managers to load identical settings onto any number of bases via the USB connection

2. IMPORTANT SAFETY INFORMATION

2.1 READ THE SAFETY BOOKLET

WARNING! Your headset includes a *Warning & Declaration* guide. Do not attempt to assemble or use your headset before you have thoroughly read and understood the Warning & Declaration booklet. If you did not receive the booklet, please contact your Jabra representative before continuing.

2.2 PROTECTING YOUR HEARING WITH SAFETONE™

WARNING! Because a headset is held firmly against your ear, sudden, loud sounds pose a potential hearing risk. Furthermore, the more you use your headset each day, the lower the maximum volume must be to protect against eventual hearing loss. Jabra PRO headsets provide effective measures that protect you against both of these types of dangers (see below).

SafeTone™ consists of two components — PeakStop™ and IntelliTone™:

- **PeakStop™ Acoustic-Shock Protection**

Your Jabra PRO headset automatically suppresses sudden loud sounds (over 118dB(A)), thereby protecting your ears from acoustic shock. This system is called PeakStop™, which is only available from Jabra.

- **IntelliTone™ Noise-Exposure Protection**

Jabra PRO headsets offer a choice of four protection levels (all of which also include the standard PeakStop™ protection described above). These features protect your hearing by preventing acoustic shocks and limiting the maximum noise exposure from the headset during your workday to 85dB(A). This system is called IntelliTone™, which is only available from Jabra.

The table below summarizes the protection levels available.

Protection level	Criteria for selecting
Level 0	Basic protection against sound spikes [118 dB(A)]; auto volume disabled
Level 1*	Less than 4 hours on telephone/day
Level 2*	4-8 hours on telephone/day
Level 3*	More than 8 hours on telephone/day
Level 4 (TT4)	Recommended Australian protection level (Telstra)

Table 1: Levels of IntelliTone™ hearing protection

It is possible to lock the IntelliTone™ setting.

For details about how to configure IntelliTone™ for your headset, please see one of the following:

- To set the IntelliTone™ level using the touchscreen, please see *Section 8.8: Setting General User Preferences*.
- To set the IntelliTone™ level using Jabra Control Center on your PC, please see the Jabra PC Suite online help.
- To set a password and lock or unlock the IntelliTone™ settings, use the Jabra Control Center on your PC; please see the Jabra PC Suite online help.

Important: Check your local laws or regulations to find out whether a specific protection level is mandated in your area. Note also that your headset settings do not affect the sound level of your desk phone handset, so you may be receiving less protection when using the handset.

* Compliant with Directive 2003/10/EC of the European Parliament and Council of 6 February 2003.

2.3 CARE AND MAINTENANCE

Protect your base and headset just as you would any other type of sensitive electronic equipment. If your Jabra devices require cleaning, then consider the following advice:

- If necessary, clean the touchscreen with a standard computer-screen cleaning solution, such as dry wipes, anti-static screen cleaner and/or prepackaged towelettes.
- The headset, headband neckband and ear hook can be wiped clean with a dry cloth if needed.
- The cords and base unit can be dry-dusted as required.
- The leatherette ear cushion(s) can be cleaned or replaced. When cleaning, remove them and wipe with a damp cloth.
- Avoid getting moisture or liquids into any button ports, receptors or other openings.
- Avoid exposing the product to rain.

2.4 OTHER SPECIFICATIONS

For complete technical specifications, see *Chapter 13: Technical Specifications*.

3. PRODUCT OVERVIEW

3.1 PACKAGE CONTENTS

- 1 Base
- 2 Headset cradle
- 3 Headset appropriate for your Jabra PRO model
- 4 Ear hook with earbud mounted (not included with Jabra PRO 9460-Duo) and two alternative earbuds
- 5 Headband (not included with Jabra PRO 9460-Duo)
- 6 Power adapter
- 7 Telephone cable
- 8 USB cable
- 9 Installation CD with Jabra PC Suite Software, user's guide and other tools
- 10 Warning & Declaration guide and quick-start guide
- 11 Neckband (included as standard for Jabra PRO 9470 only)
- 12 Startup poster

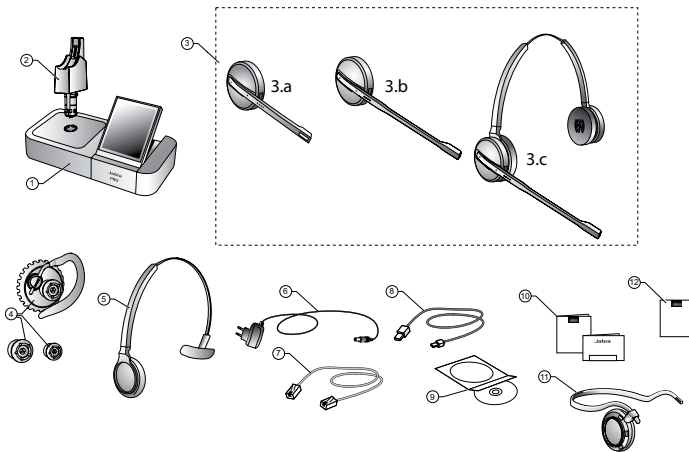


Figure 1: Components included with Jabra PRO models that feature a touchscreen base

Product variants contain:

Jabra PRO 9460

- 1 Base
- 2 Headset cradle
- 3b Headset
- 4 Ear hook
- 5 Headband
- 6 Power adapter
- 7 Telephone cable
- 8 USB cable
- 9 Installation CD with Jabra PC Suite Software
- 10 Warning & Declaration guide and quick-start guide
- 12 Startup poster

Jabra PRO 9460 Duo

- 1 Base
- 2 Headset cradle
- 3c Headset
- 6 Power adapter
- 7 Telephone cable
- 8 USB cable
- 9 Installation CD with Jabra PC Suite Software
- 10 Warning & Declaration guide and quick-start guide
- 12 Startup poster

Jabra PRO 9470

- 1 Base
- 2 Headset cradle
- 3a Headset
- 4 Ear hook
- 5 Headband
- 6 Power adapter
- 7 Telephone cable
- 8 USB cable
- 9 Installation CD with Jabra PC Suite Software
- 10 Warning & Declaration guide and quick-start guide
- 11 Neckband
- 12 Startup poster

3.2 OPTIONAL ACCESSORIES

The following accessories for Jabra PRO are available separately and are occasionally mentioned in the other chapters of this manual. You may have ordered one or more of these together with your headset.

- 1 **Remote Handset lifter GN1000 RHL**
- 2 **Electronic-hookswitch adapter for your desk-phone model**
- 3 **Neckband (not compatible with Jabra PRO 9460-Duo)**
- 4 **Replacement headband (not compatible with Jabra PRO 9460-Duo)**
- 5 **Replacement ear hook (not compatible with Jabra PRO 9460-Duo)**
- 6 **Replacement ear cushion**

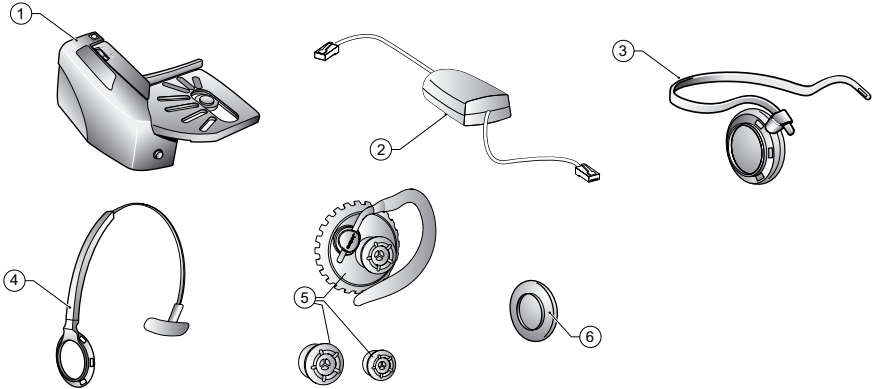


Figure 2: Jabra PRO accessories (available separately)

Accessory variants contain:

Jabra PRO 9460

- | | | |
|---|----------|----------------------------------|
| 1 | 01-0369 | Remote Handset lifter GN1000 RHL |
| 2 | * | Electronic-hookswitch adapter |
| 3 | 14121-24 | Neckband |
| 4 | 14121-25 | Replacement headband |
| 5 | 14121-26 | Replacement ear hook |
| 6 | 14101-19 | Replacement ear cushions |

Jabra PRO 9460 Duo

- | | | |
|---|----------|----------------------------------|
| 1 | 01-0369 | Remote Handset lifter GN1000 RHL |
| 2 | * | Electronic-hookswitch adapter |
| 6 | 14101-19 | Replacement ear cushions |

Jabra PRO 9470

- | | | |
|---|----------|----------------------------------|
| 1 | 01-0369 | Remote Handset lifter GN1000 RHL |
| 2 | * | Electronic-hookswitch adapter* |
| 3 | 14121-24 | Neckband |
| 4 | 14121-25 | Replacement headband |
| 5 | 14121-26 | Replacement ear hook |
| 6 | 14101-19 | Replacement ear cushions |

* Jabra LINK 14201-09 MSH Cord, 14201-10 DHSG Cord, 14201-17 (Polycom), 14201-19 (Avaya), 14201-20 (Avaya & Alcatel), and 14201-22 (Cisco)

3.3 HEADSET DIAGRAMS

Jabra PRO models are available with several headset options, each of which is illustrated below. The following key applies to all three headset illustrations:

- 1 Multifunction button (answer/end call, among other functions)
- 2 Touch panel for volume and mute control
- 3 Activity and status indicator (multicolor LED)
- 4 Noise-cancelling port or Noise Blackout™ microphone
- 5 Voice microphone
- 6 Boom arm (flex or midi)
- 7 Recharge contact
- 8 Mount for wearing-style attachments
- 9 Speaker

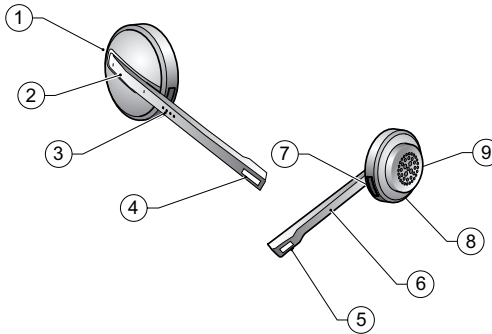


Figure 3: Jabra PRO Midi headset (included with Jabra PRO 9470) as seen from the outer and inner sides, respectively

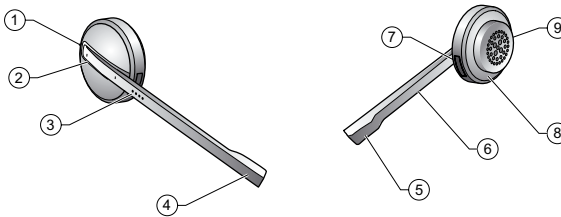


Figure 4: Jabra PRO Flex headset (included with Jabra PRO 9460) as seen from the outer and inner sides, respectively

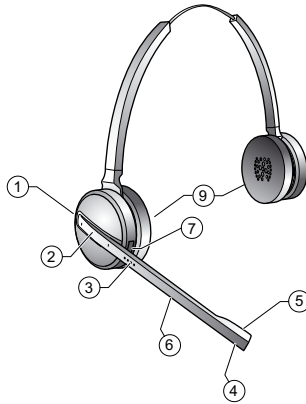


Figure 5: Jabra PRO 9460-Duo headset

Note: most of the other illustrations in this manual show the Jabra PRO Midi headset; all other headset models feature similar controls at similar locations, as illustrated in the figures above.

3.4 BASE DIAGRAM

1 Headset cradle

2 Recharge contact

3 Touchscreen

4 Desk-phone clear dial-tone switch

Note: Not included on the Jabra PRO 9470 base, where this is software controlled (set up automatically)

5 Cover for desk-phone control

Note: There is no clear dial-tone switch underneath on the Jabra PRO 9470 base

6 Telephone port

7 Handset port

8 AUX port

9 USB port

10 Power adapter port

11 Remote online-indicator port

12 Security slot

13 Speaker for ring tones and touchscreen audio feedback

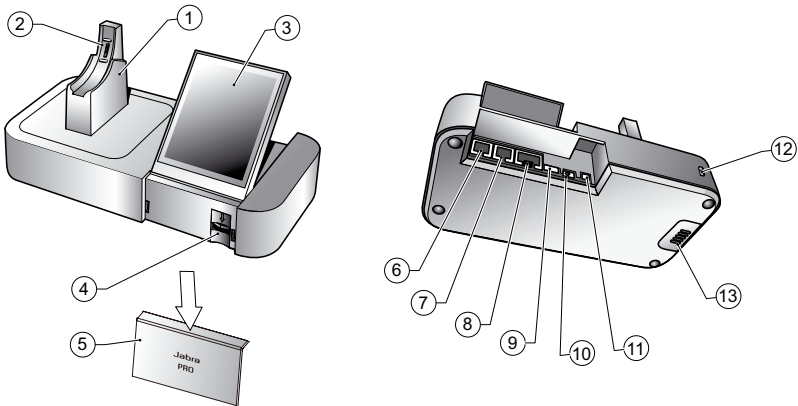
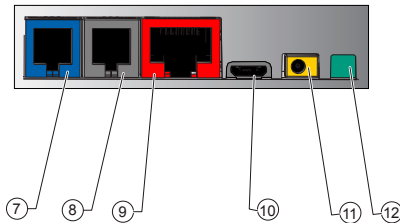


Figure 6: Jabra PRO Touchscreen Base, seen from the front and back, respectively



4. SYSTEM SETUP AND CONNECTIONS

This chapter explains how to assemble your Jabra PRO solution and connect it to your other office equipment.

4.1 SETUP OVERVIEW AND BACKGROUND

Connection Diagram (for no headset port)

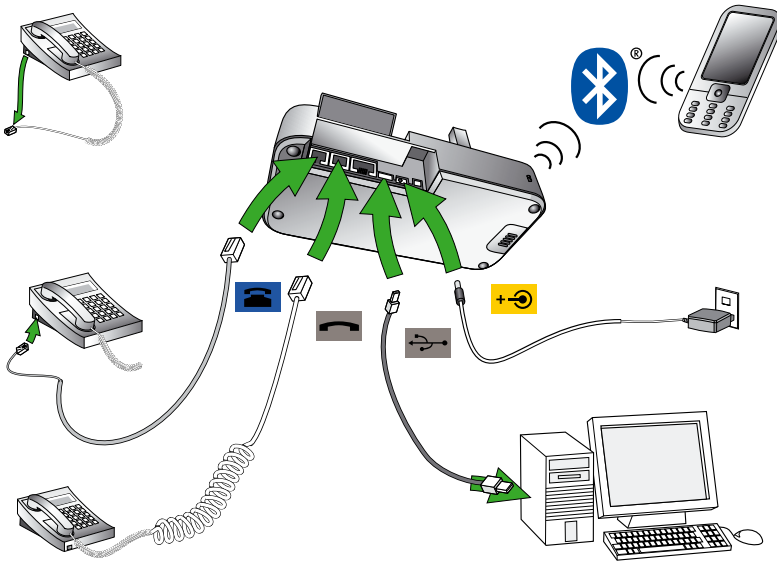


Figure 7: Jabra PRO base connections (Bluetooth available with Jabra PRO 9470 only)

Using a Headset with a Desk Phone

To accommodate the full range of desk phones in use, Jabra PRO is able to adapt itself to your phone by offering the following settings:

- **Termination standard**

Though all desk phones use the same type of cable to connect the handset to the phone body, the internal wiring standard for this cable varies according to desk-phone model. Jabra PRO supports all of the possible combinations — you will adjust the clear dial-tone switch on the Jabra PRO base until you find the right one. Note that there is no clear dial-tone switch on the Jabra PRO 9470 base — here the right combination is found automatically.

- **Microphone level**

The sound volume sent from your Jabra PRO base must be adjusted to ensure that it is neither too quiet nor too loud for your desk-phone model (as it must be neither too quiet nor too loud for the person you are talking to).

- **Electronic-hookswitch or handset lifter**

An electronic hookswitch adapter or handset lifter will enable you to answer the phone or hang up using only the button on your headset or its docking operations. These are available as optional accessories for Jabra PRO; the best choice for you will depend on your desk-phone model.

The Jabra PRO setup wizard will help you to make each of the above settings.

Using a Headset with a Softphone

To use Jabra PRO with a softphone, you must connect the Jabra PRO base to your PC via a USB cable and install the Jabra PC Suite collection of software and softphone drivers on your PC. The Jabra PRO setup wizard will remind you to do this.

Using a Jabra PRO 9470 Headset with a Mobile Phone

Jabra PRO 9470 Base can connect to a mobile phone using Bluetooth (the headset itself does not use Bluetooth). To enable Bluetooth communication, you must *pair* the two units. The Jabra PRO setup wizard will help you to do this.

4.2 THE QUICK-START SETUP WIZARD

To get started, just power the base and then follow the set-up-wizard instructions on the touchscreen.

To run the setup wizard:

1. Review the information outlined in *Section 4.1: Setup Overview and Background*. It will help you understand the types of tasks that the setup wizard will ask you to do.
2. Assemble the base and apply power to it. (See also *Section 4.3: Preparing the base and and Assembling the Headset*).
3. The base automatically launches the setup wizard the first time you turn it on. On each page of the wizard, follow the instructions shown and then touch the “next” icon (see also *Section 8.2: Using the Touchscreen*).
 - **Note:** When the wizard is helping you set up your desk phone, it will ask you to call the Jabra test server. This enables the base to test its clear dial-tone switch and mic.-level settings by exchanging signals with the test server. See your Jabra PRO Quick Start Guide for a list of Jabra test-server phone numbers (also available on our web site). If, for some reason, the connection to the test server fails, you are prompted to retry; you can retry the automatic setup or try a manual setup. You can also choose to retry the cable setup.
4. Continue until the wizard tells you that you are finished. At this point, all of your phones should be connected and your headset will be fully configured to work with each of them.

The remainder of this chapter provides extra information about each step of the setup process. Refer to this chapter if you have trouble while working through the on-screen setup wizard.

Tip: You can re-start the setup wizard manually at any time, thereby re-initializing some or all base and headset settings. See *Section 8.9: Re-running the Setup Wizards* for details.

4.3 PREPARING THE BASE AND AND ASSEMBLING THE HEADSET

Adjusting the Headset Cradle

The headset cradle is already attached to the Jabra PRO base when it is delivered but you might want to adjust its angle in order to optimize for left- or right-handed docking. To do this, simply rotate the cradle until it sits at your preferred docking angle. As you rotate the cradle, you will feel it fit into a number of distinct positions on the base. The figure below shows the angular range; -90 to +45 degrees.

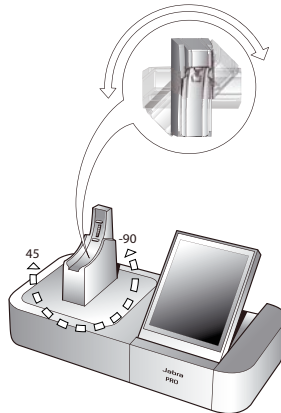


Figure 8: Adjusting the headset cradle angle on the base

If, at a later stage, you need to remove the cradle (for example to replace it with another), simply rotate the cradle clockwise as far as possible, then carefully pull it out from the base.

To attach / re-attach a headset cradle on the base, hold the cradle against the base so that the large and small pins on either side of the cradle post align with the matching slots on either side of the hole on the base. Then simply push it into the base.

Applying Power to the Base

Connect the mains power adapter to the port marked  on the base, and then plug the adapter into a mains power socket, as shown in the figure below.

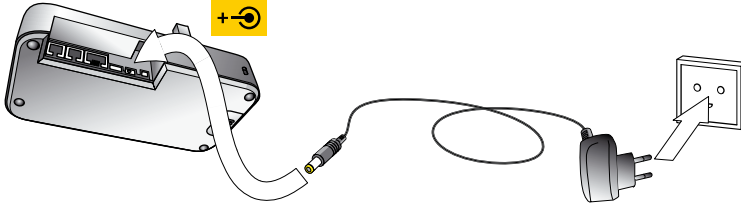


Figure 9: Powering the base

Assembling the Headset

Jabra PRO headsets — other than the Jabra PRO 9460-Duo — can be worn in any of several wearing styles, including headband, ear hook and neckband.

Ear hook and headband wearing-style attachments are included in the standard packages. The neckband is included as standard for Jabra PRO 9470 but must be ordered separately for Jabra PRO 9460. Jabra PRO 9460-Duo is always worn as a headband and does not require any assembly.

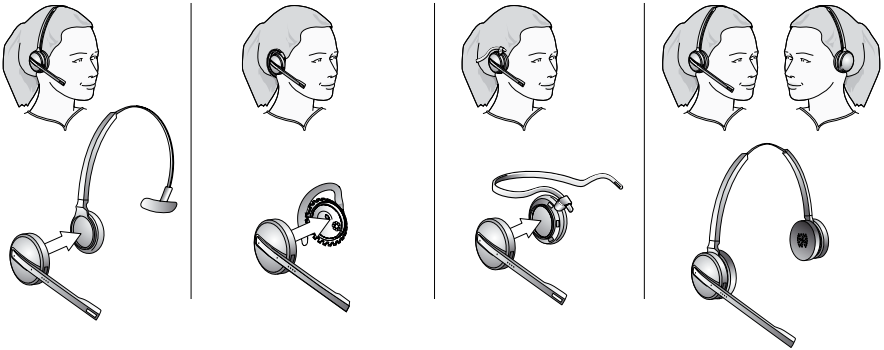


Figure 10: Assembling and wearing the Jabra PRO headset in various styles

Choose a style and assemble the headset so that it will fit to your preferred ear. See [Section 7.2: Attaching or detaching a Wearing Style](#) for detailed instructions.

Important: Regardless of which wearing style you choose, always be sure to adjust the headset so that the microphone is positioned as close to your mouth as possible. This will maximize the noise-cancelling effect of the microphone and make sure that your voice comes through loud and clear.

Placing the Headset in its Cradle

Whenever you are not using your headset, you should keep it in its recharge cradle as shown in the figure below. It is held firmly in place by a magnet. Note that placing it in its cradle is sometimes called docking the headset. When the headset is docked correctly in the cradle, an extra icon is displayed in the touchscreen's status bar. See the section "Using the Touchscreen".

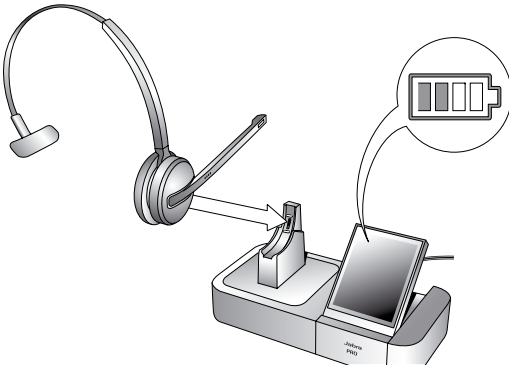


Figure 11: Inserting the headset into the cradle for storage and charging

4.4 CONNECTING THE BASE TO YOUR DESK PHONE

Identifying Your Desk Phone Features

The way you connect and configure the Jabra Pro base will vary according to the type of desk phone you are using. Check your phone (by looking at its connectors and/or documentation) to see which of the following features it has, then see the appropriate section below to learn how to connect your Jabra PRO base to the phone:

- **Standard desk phone**
This type of phone does not include any built-in support for adding a headset. You will therefore connect the Jabra PRO base between your desk phone's handset and body, enabling you to use either the handset or headset. All desk phones can be connected in this way.
- **Desk phone with headset port**
This type of phone provides a dedicated headset port (usually at the back of the phone). These phones typically also have a button on the front panel for switching between the headset and handset.
- **Desk phone with electronic hookswitch**
This type of phone is able to place or answer a call automatically when you press the multifunction button on your headset. This requires a desk phone that includes an electronic hookswitch feature and also requires an extra adapter cable from Jabra. Please see our web site and/or refer to your telephone's user manual for details about electronic hookswitch compatibility.
- **Desk phone with GN1000 Remote Handset Lifter**
A handset lifter physically lifts your handset from your desk phone when needed, thereby creating a solution that works similarly to an electronic hookswitch. The GN1000 Remote Handset Lifter is available separately; please speak to your Jabra dealer for details.

Connecting to a Desk Phone without a Headset Port

If your desk phone does not include any built-in support for adding a headset, then connect the Jabra PRO base between the handset and the desk-phone body as described below.

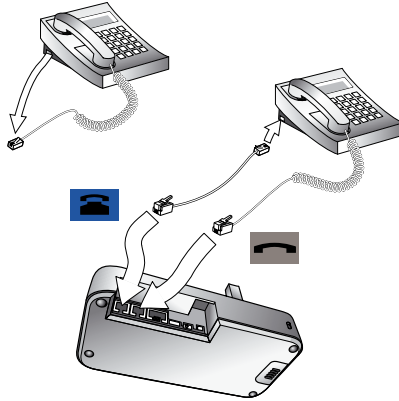

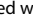


Figure 12: Connecting to a desk phone without a headset port

1. On your desk phone, unplug the handset cable from the phone body at the phone-body side.
2. Plug the loose end of your handset cord to the port marked  on the base.
3. Connect the telephone cord included with your headset from the port marked  on the Jabra PRO base to the handset port on your desk phone body.
4. Your base and desk phone are now connected. Note, however, that you must still configure the base for your specific desk-phone model. The setup wizard usually helps you to do this, but you can also make this setting at any time using the touchscreen (see Section 8.9: *Re-running the Setup Wizards*).

Connecting to a Standard Headset Port

If your desk phone includes a dedicated headset port, then take advantage of this feature by connecting the Jabra PRO base as follows:

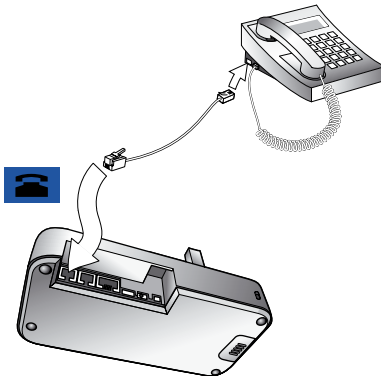



Figure 13: Connecting to a desk phone with a headset port

1. Connect the telephone cord included with your headset (marked with a blue band) from the port marked  on the Jabra PRO base to the headset port on your desk-phone body. See your desk-phone documentation if you are not sure where this port is. If the supplied cord does not fit the port of your desk phone, then see "Connecting to a Proprietary Headset Port," below.
2. Your base and desk phone are now connected. Note, however, that you must still configure the base for your specific desk phone model. The setup wizard usually helps you to do this, but you can also make this setting at any time using the touchscreen (see *Section 8.9: Re-running the Setup Wizards*).

Note: Do not connect the base to a dedicated headset port if you want to use a GN1000; connect it in line with the handset instead (see also "Connecting to a Desk Phone without a Headset Support," above). One reason to use the GN1000 instead of the headset port is that the GN1000 has a ring detector, thereby enabling the base and headset to target the desk phone automatically when it rings (many electronic-hookswitch solutions also provide ring detection).

Connecting to a Proprietary Headset Port

Some types of desk phones provide a non-standard headset port. This is usually part of an advanced solution that also provides an electronic hookswitch. These types of phones normally also include the standard handset ports described above, but you should consider taking advantage of the proprietary connection if possible.

To use this type of connection, you must purchase a special adapter designed to match the requirements of your desk phone and headset. The adapter comes with instructions for how to connect it. See also *Section 4.6: Using a Handset Lifter or Electronic Hookswitch* for more information about this type of solution.

4.5 CONFIGURING THE JABRA PRO BASE FOR YOUR DESK PHONE

When the touchscreen wizard is helping you set up your desk phone, it will ask you to call a Jabra test server. This enables the Jabra PRO base to test its clear dial-tone switch and microphone level settings by exchanging signals with the test server.

Important: Your headset will not work correctly with your desk phone until you have set both the clear dial-tone switch and microphone level as described in this section. You must repeat these procedures if you move the headset to a new type of desk phone.

Setting the Clear Dial-tone Switch to find a Clear Dial-tone

Follow the procedure below to find the best position for the clear dial-tone switch on the Jabra PRO base; the correct position varies by desk phone model.

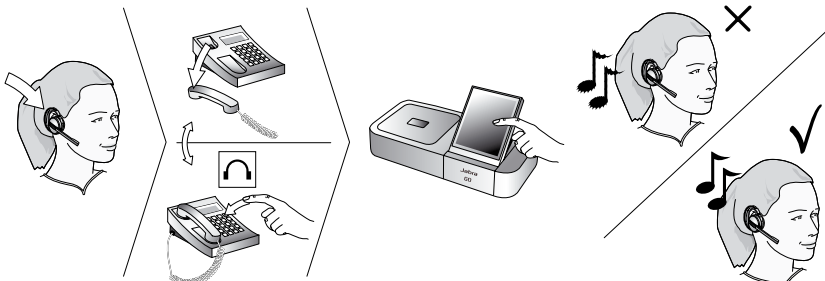


Figure 14: Setting the clear dial-tone switch

For Jabra PRO 9460:

1. Open the panel on the front-right of the Jabra PRO base by slipping your fingernail under the bottom edge of the panel and pulling forward and up. This reveals the clear dial-tone switch. It is labelled with the letters A to G.
2. The touchscreen wizard prompts you to call the Jabra test server. Follow the on-screen instructions. If the base cannot contact the test server, you can re-try or you can try to set the switch manually — see the procedure below.
3. The wizard prompts you to select a position (A – G) manually on the base's clear dial-tone switch. The base itself will determine which of these is the best.

If the Jabra PRO 9460 base cannot contact the Jabra test server:

In this case, you can choose to set the switch manually:

1. Open the panel on the front-right of the Jabra PRO base by slipping your fingernail under the bottom edge of the panel and pulling forward and up. This reveals the clear dial-tone switch. It is labelled with the letters A to G.
2. Put on the headset.
3. **Tap** the multifunction button at the back of the headset to activate the audio link to your desk phone.
4. Press the headset button on your desk phone (or lift the handset from your desk phone and set it aside). This connects your desk phone to the phone network.
5. Step slowly through each position (A – G) of the clear dial-tone switch, listening for a dial tone in your headset at each one. Find the setting where the dial tone is strong, clear and undistorted.
If positions A and G both sound best, then choose position A; if another pair of positions sound best, then pick one and remember the other one — you will find which of these settings is best when you are testing the microphone level (see below).
6. Press the headset button on your desk phone (or hang up the handset) to disconnect from the phone network. Then **tap** the multifunction button at the back of the headset to de-activate the audio link to your desk phone.
7. Set the microphone level, as described in the section below.

For Jabra PRO 9470:

There is no clear dial-tone switch accessible to the user on the base — stepping through positions A – G to find the best one occurs automatically. You simply need to call the Jabra test server and follow the on-screen instructions.

If the Jabra PRO 9470 base cannot contact the Jabra test server:

In this case, you can choose to set the switch manually. Follow the same procedure as given above for Jabra PRO 9460 *except* that you must step through the switch positions using the touchscreen (no switch is accessible to the user on the base). The desk phone part of the setup wizard guides you through.

Setting the Microphone Level:

Follow the procedure below to find the best microphone level for your desk phone. The correct setting varies by desk phone model.

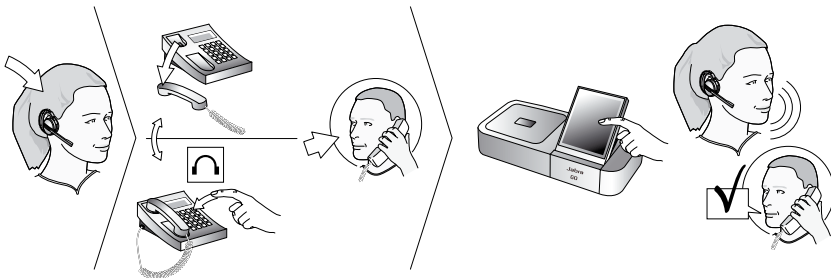


Figure 15: Setting the microphone level manually

1. If you have not already done so, then set the clear dial-tone switch as described above.
2. The touchscreen wizard prompts you to call the Jabra test server. Follow the on-screen instructions. The base will determine the optimal microphone level automatically.
If the base cannot contact the test server, you can re-try or you can try to set the mic.-level manually — see the procedure below.

If the Jabra PRO base cannot contact the Jabra test server:

In this case, you can choose to set the mic.-level manually:

1. If you have not already done so, then set the clear dial-tone switch as described above.
2. Make arrangements to call a friend who is not sitting nearby. Tell your friend that you will be testing your headset and ask him or her not to adjust his or her own telephone volume during the test.
3. Call your friend by doing the following:
 - Wear the headset and position its microphone close to your mouth.
 - Tap the multifunction button at the back of the headset to activate the audio link to your desk phone.
 - Press the headset button on your desk phone (or lift the handset) to connect to the phone network.
 - Dial your friend's number using your desk-phone buttons.

- As you speak with your friend, adjust the mic.-level control on the Jabra PRO touchscreen (Desk phone setup wizard, manual setup) until your friend tells you that your voice sounds clear (loud enough) but not distorted (too loud). The desk phone part of the setup wizard guides you through. Remind your friend not to adjust his or her own volume during the test.
If your best mic.-level setting turns out to be the loudest possible and you found more than one best position for the clear dial-tone switch, then move the clear dial-tone switch to the alternative setting and try again to find the best mic.-level together with your friend. If this time the mic.-level is not set to the maximum, then keep this new combination of settings.
- Press the headset button on your desk phone (or replace the handset) to hang up. Then dock the headset (the audio link from the headset to your desk phone closes automatically when you dock the headset). Your headset is now ready for use.

4.6 USING A HANDSET LIFTER OR ELECTRONIC HOOKSWITCH

With traditional desk phones, you must lift the handset (or press a desk phone headset button, if present) whenever you want to place or receive a call. However, you can automate this connection by adding one of the following:

- GN1000 Remote Handset Lifter, which will work with nearly any phone.
- An electronic hookswitch connection, which requires a supported desk phone and a phone-specific adapter from Jabra.

Electronic solutions such as these enable you to answer an incoming call when away from your desk simply by pressing a button on the headset. They also tell the base when your desk phone is ringing, thereby setting the desk phone as the current target phone automatically. The GN1000 and most electronic hookswitch solutions support ring detection.

Connecting to the GN1000 Remote Handset Lifter

A remote handset lifter gives you remote call control with a Jabra PRO headset up to 150 m away from your desk. It lets you answer calls, end calls and transfer ring tones to the headset.

The GN1000 Remote Handset Lifter is an accessory available from Jabra. It is a motorized device that physically lifts the handset when you use controls of your headset or base. You can use the handset lifter with nearly any type of desk phone — including phones that also happen to have electronic hookswitch support.

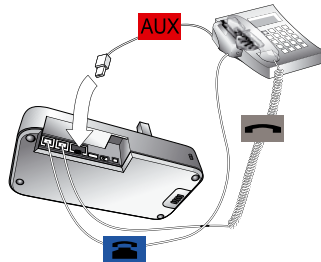


Figure 16: Connecting to a GN1000 Remote Handset Lifter

To connect the Jabra PRO base to a GN1000 RHL handset lifter:

- Connect the Jabra PRO base to your desk phone using the standard in-line setup as described in *Section 4.4: Connecting the Base to Your Desk Phone*. Do not use your desk phone's headset port if it has one.
- Assemble the GN1000 RHL handset lifter and attach it to your desk phone as described in the lifter's documentation.
- Connect the control cord attached to the GN1000 to the port marked **AUX** on the Jabra PRO base. Press it in until you hear or feel the soft click of the connector tab popping into place.
- The base and handset lifter are now connected.

Using an Electronic-Hookswitch Connection

If your desk phone includes an electronic hookswitch, then you can take advantage of this feature by purchasing and installing the appropriate type of electronic hookswitch adapter for your phone. Adapter requirements can be very different between desk phone models. Please see our web site and/or refer to your telephone's user manual for details about electronic hookswitch compatibility. You can configure the connection using either the touchscreen wizard or the Jabra PC Suite.

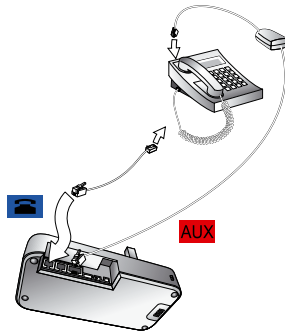


Figure 16.1: Connecting using an electronic-hookswitch adapter (Jabra LINK series)

To connect the Jabra PRO base to an electronic hookswitch port:

1. Make sure that you have purchased the correct electronic hookswitch adapter for your desk phone model from Jabra.
2. Connect the electronic hookswitch adapter as described in the cabling guide included with the adapter.
3. Configure the Jabra PRO base to communicate correctly with your model of desk phone. The required standard is clearly printed on a label attached to the hookswitch cable. The touchscreen setup wizard will automatically ask for this during initial setup; see also *Section 8.9: Re-running the Setup Wizards* for instructions about how to make this setting at any time after the initial setup.
4. Check the documentation for your desk phone to see which (if any) steps are required to configure your desk phone to use the electronic hookswitch.

4.7 CONNECTING THE BASE TO YOUR COMPUTER

Connect the touchscreen base to your computer if you would like to use your headset together with a softphone running on the PC. You can also use this connection to configure your headset and base and to update their firmware.

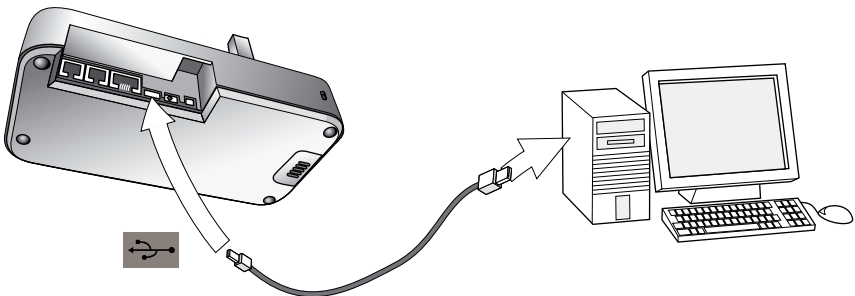
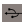


Figure 17: Connecting to a computer

To connect the Jabra PRO base to your computer:

1. Connect the small connector of the supplied USB cable to the port marked  on the Jabra PRO base.
2. Connect the other end of the USB cable to any free USB port on your computer.
3. Install the Jabra PC Suite software on your computer (see *Chapter 5: Installing and Running the Jabra PC Suite*).


4.8 CONNECTING JABRA PRO 9470 TO A MOBILE PHONE

The Jabra PRO 9470 Touchscreen Base features Bluetooth and can therefore be used with any mobile phone that also supports Bluetooth. You must set up the wireless communication between the two devices by *pairing* them. The setup wizard helps you to do this during initial setup and can repeat the procedure at any time later. See *Chapter 9: Using Jabra PRO 9470 with a Mobile Phone* for details.

4.9 USING A REMOTE ONLINE INDICATOR

A remote online indicator (OLI) connects to your base via a cable and lights up to show colleagues when you are on the phone.

To connect an OLI to your base:

1. Unpack and assemble your OLI device as described in its documentation.
2. Connect the cable from your OLI device to the port marked  on the Jabra PRO base.

See also the documentation that came with your OLI for more information about that product.

5. INSTALLING AND RUNNING THE JABRA PC SUITE

5.1 JABRA PC SUITE FEATURES

The Jabra PC Suite is a collection of programs that support and expand your headset's features. It enables you to:

- Control several types of softphone programs from your headset
- Configure the base and headset from your PC
- Update the firmware for your base and headset
- Save and recall headset configuration to/from your PC
- Upload language packs for touchscreen menus

5.2 INSTALLING THE JABRA PC SUITE

Installation instructions and a setup program for Jabra PC Suite are included on the CD ROM that came with your Jabra PRO headset. You can also download the latest version of the package from the Jabra web site. Please see the documentation included on the CD or in the download package for instructions and system requirements.

5.3 JABRA PC SUITE DOCUMENTATION

All programs of the Jabra PC Suite include complete online help. Where appropriate, this manual refers to settings and features provided by the Jabra PC Suite, but please see the online help for complete details about all software features.

5.4 FIRMWARE UPDATES

Firmware is software that runs inside many types of electronic devices, including your Jabra base and headset. Occasionally, Jabra may release updates that can improve performance and/or add new functionality to your base and headset.

Obtaining Firmware Updates

Visit the Jabra web site to find out if firmware updates are available for any of your Jabra PRO products. You will be able to download the updates from there as they become available.

Applying Firmware Updates

To apply a firmware update, connect your Jabra PRO Base to your computer and run the firmware-update application of the Jabra PC Suite. See the Jabra PC Suite online help for complete details.

5.5 CENTRAL ADMINISTRATION AND MASS DEPLOYMENT

If you are an IT manager of an organization that is rolling out a large number of Jabra PRO solutions, then you might wish to use the Jabra Control Center, which is part of the Jabra PC Suite.

For advanced Jabra products with many configuration parameters, the Jabra Control Center lets you save a device's complete configuration to a file on disk and load it into the same, or a similar device at a later point in time. This feature enables you to make a snapshot or backup of your device's current configuration.

A configuration file can be used to restore your device's configuration at a later time if you wish to revert to a previous snapshot, or if you need to clone your settings to a new device.

For mass deployment, you can save a copy of configuration settings from one Jabra PRO device on PC and quickly apply this configuration to new Jabra PRO devices when you connect them to the administrator PC.

The ability to clone the configuration of one device to other similar devices is useful for mass deployment of many devices in an organization. This means that an administrator only needs to manually go through the setup of a single device and save its configuration to a file. This master configuration file can then be loaded into all devices that are deployed in the organization.

Access to a device from Jabra Control Center can be password protected, ensuring that only authorized users can change settings.

6. DAILY USE — CALLING, ANSWERING AND HANGING UP

6.1 HEADSET CONTROLS AND INDICATORS

The Multifunction Button

This button is located near the back of the headset. Through a combination of taps, double-taps and presses, you will be able to execute all of the most-needed functions, including answering a call, hanging up, switching between held calls, and more.

See Section 7.3: *Headset Controls and Signals* for complete details of all headset commands.

Headset Visual and Audio Indicators

The headset provides status messages using both lights and audio signals. For example, the LED lights various colors to indicate battery level, incoming calls, on/off operations, etc. Audio signals tell you when you have pressed a button, selected a new target phone or changed the volume; in-ear ring tones are also provided.

See Section 7.3: *Headset Controls and Signals* for complete details.

6.2 THE TARGET PHONE CONCEPT

The target phone is the phone to which the audio link for your (outgoing) call is activated when you tap the multifunction button (MFB) on the headset or touch the green handset icon on the touchscreen. You can select a different target phone by touching a phone icon or pressing the headset MFB.

The large foreground phone icon indicates the current target phone.



- 1. Current target phone:** this large icon indicates the phone to which you will open a connection if you **tap** the headset multifunction button or touch the green handset icon at the bottom of the screen. **Double-tap** the headset multifunction button to redial on this phone (selected mobile and softphones only).

Double-tap the headset multifunction button to redial on this phone (selected mobile and softphones only).

- 2. Other phones:** touch the appropriate icon here to change the current target phone — or press the headset multifunction button when no call is active.

Figure 18: The current target phone is indicated by the large icon on the touchscreen; change the target by touching on one of the other icons

The effect of activating the audio link to an idle target phone varies depending on the gesture you use on the MFB, on your set-up and on the features supported by your phone — for mobile phones you can activate voice-activated dialing or redial, for desk phones with a hook lifter you lift the handset off-hook, for softphones you can open the audio link and for some softphones redial.

If you initiate an outgoing call from a mobile- or softphone, the audio link opens automatically when the phone goes off-hook. This phone-initiated outgoing call does not affect your choice of target phone.

For incoming calls on phones with ring detection — as is the case with mobile phones, most softphones and desk phones with a hook lifter or electronic hookswitch (EHS) — the ringing phone is indicated by a large ringing icon and activating MFB/green handset icon accepts the call. When the incoming call ends, the target phone returns to the selected target phone before the incoming call.

For phones where ring detection is not possible, you have to change the target phone manually before you can accept the call. In this case, when the call ends the target phone is the phone for which you accepted the call.

For maximum convenience, set the target phone to the phone which you are most likely to use for outgoing calls.

Note: if the target phone is shown greyed out on the touchscreen, it means that the phone has become disconnected. This can only occur with mobile- or softphones. You need to either re-connect the phone or touch another phone on-screen to select a different target. See the figure below.



Figure 19: A disconnected target phone is shown greyed out on the touchscreen

6.3 HOW TO MAKE A CALL

Calling through a Desk Phone

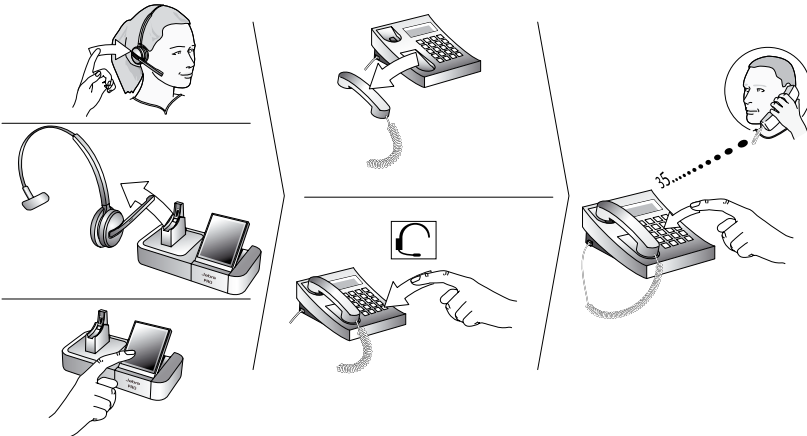


Figure 20: Placing a call with your headset and desk phone

To place a call through your desk phone:

1. If necessary, set the desk phone as the current target for your headset (see also *Section 6.2: The Target Phone Concept*).
2. Do one of the following to get a dial tone:
 - **If you are using a handset lifter or electronic-hookswitch:**
Open the audio link to the headset by doing one of the following: tap the headset's multifunction button or touch the call icon on the base touchscreen. You should now hear a dial tone.
 - **If you do not have a handset lifter or electronic-hookswitch:**
Open the audio link to the headset by doing one of the following: **tap** the headset's multifunction button; touch the call icon on the base touchscreen; or lift the headset from the base (if enabled, see *Section 8.13: Headset Docking-Operation*). Then lift your desk phone handset from the receiver and set it aside — or press the headset button, if your desk phone has one — to get a dial tone.
3. Dial the number using your desk phone's buttons.

Calling through a Softphone

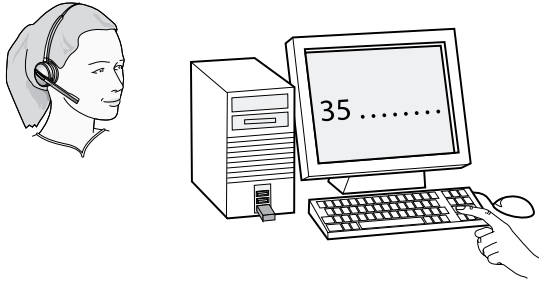


Figure 21: To make a call on your softphone, simply dial as usual while wearing the headset

To place a call through your softphone, dial the number or choose a contact using your softphone program. The audio connection to your headset will open automatically as soon as your recipient's phone begins ringing.

Notes:

- If you are using an unsupported softphone, you might need to use Jabra Control Center to open the audio link from your softphone to your headset before dialing. See the PC Suite online help for details. See also Chapter 5: Installing and Running the Jabra PC Suite.
- Jabra PRO includes call handling (e.g. ringtone detection, accept call, hang up) for supported softphones only. Unsupported softphones see the headset as a standard sound card.

Standard Mobile Phone Dialing (Jabra PRO 9470 Only)

To place a call through your mobile phone, dial the number as usual and then press the call button on the mobile. On most phones, the audio link from the mobile phone to your headset opens automatically.



Figure 22: To make a call on your mobile phone, simply dial as usual while wearing the headset

Note: some mobile phones might work differently and/or require you to configure them to work as described above. Please see your mobile phone documentation for complete details about how to use it with a Bluetooth headset.

Voice-Activated Mobile Phone Dialing (Jabra PRO 9470 Only)

This feature requires that your mobile phone supports the *hands-free Bluetooth profile*. See your mobile phone's documentation for details about how to set up voice-activated dialing and whether this feature is supported over Bluetooth.



Figure 23: To use voice-activated dialing, tap the multifunction button and speak the appropriate voice tag

To use voice-activated dialing with a mobile phone that supports it:

1. If necessary, set the mobile phone as the current target for your headset (see also Section 6.2: *The Target Phone Concept*).
2. Tap the headset's multifunction button or touch the open-connection icon on the touchscreen. You will then hear the voice-dialing prompt generated by your mobile phone. Speak the trigger for the number you want and allow the phone to dial.

Tip: Your voice tags may work better if you record them using the headset rather than your phone's built-in microphone. This will make sure that the sound the phone "hears" coming from the headset when dialing will be the closest possible match to the recorded voice tag.

6.4 HOW TO ANSWER A CALL

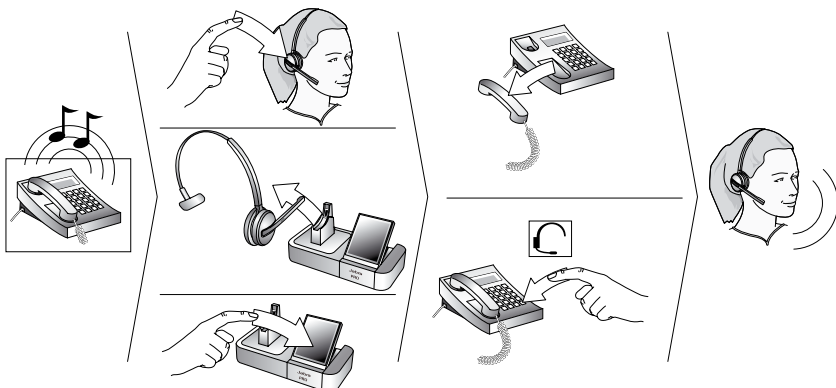


Figure 24: Answering a call

To answer a call from any connected phone:

1. You will hear a ring tone from the target phone, Jabra PRO base and/or headset. Usually, the touchscreen indicates which phone is ringing and (if possible) shows the incoming phone number. The ringtone played in the headset normally also indicates which phone is ringing (see also Section 7.3: *Headset Controls and Signals*). Do one of the following:

- **For desk phones without automatic ringtone detection:**
In this situation, you will hear your desk phone ring but will not hear a ringtone in your headset or see a ring indicator on the touchscreen. Set the desk phone as the current target by touching the desk phone icon on the touchscreen or **pressing** the headset's multifunction button until you hear the desk phone audio indicator (see also *Section 6.2: The Target Phone Concept*). This is not necessary if you have a GN1000 headset lifter or electronic hookswitch connection that supports ring detection.
 - **For all other types of phones:**
The base automatically switches the target phone to the one that is ringing, as indicated by the touchscreen icon and ringtone in the headset. You do not need to change the target manually.
2. Do one of the following to answer the call:
- **For desk phones without automatic ringtone detection:**
Open the audio link to the headset by doing one of the following: **tap** the headset's multifunction button; touch the call icon on the base touchscreen; or lift the headset from the base (if enabled, see *Section 8.13: Headset Docking-Operation*). Then lift the handset from your desk phone and set it aside or press the desk phone headset button (if present) to answer the call. (In this case, lifting the headset from its charging cradle will not open the audio link because the base cannot tell that a phone is ringing.)
 - **For all other types of phones and desk phones:**
Do one of the following: **Tap** the multifunction button, touch the answer-call icon on the touchscreen or lift the headset from its cradle.

6.5 HANGING UP

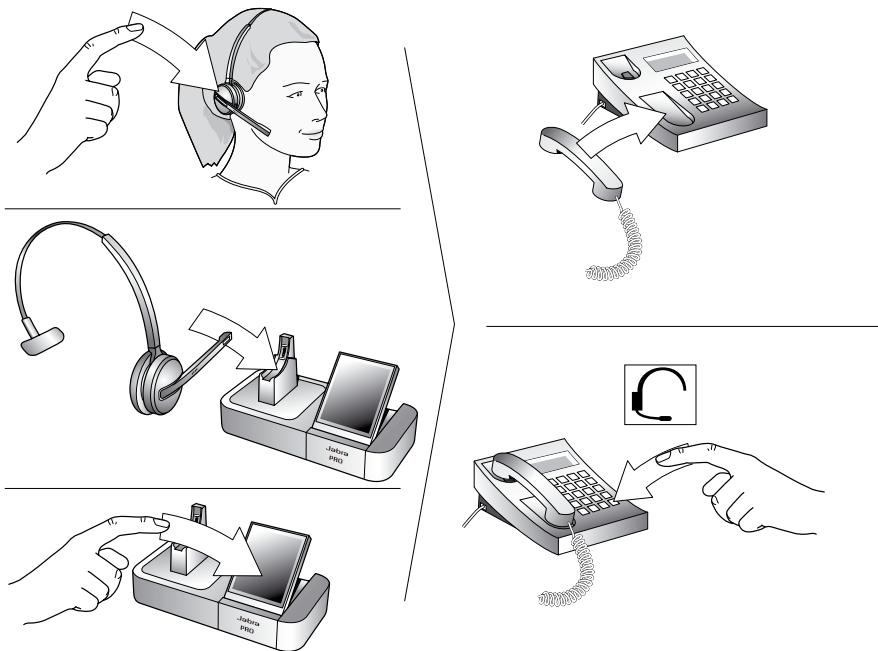


Figure 25: Hanging up

To terminate the current call when no calls are on hold, do one of the following:

- **For desk phones without a handset lifter or electronic-hookswitch:**
Place the desk phone handset back onto its receiver or press the desk-phone headset button (if present) to terminate the call. Then close the audio link to the headset by doing one of the following: **tap** the headset multifunction button, touch the end-call icon on the base touchscreen, or dock the headset to the base.
- **For all other types of phones:**
Tap the headset multifunction button, touch the end-call icon on the base touchscreen, or dock the headset to the base.

6.6 CONTROLLING THE SPEAKER VOLUME AND MICROPHONE

The headset features a touch panel that is similar to the touch pad included with many laptop computers. Use it to adjust the volume you hear in your headset and to mute/enable the microphone.

- Slide your finger up the touch panel (away from your mouth) to increase the volume.
- Slide your finger down the touch panel to decrease the volume.
- Double-tap on the touch panel to mute or unmute the microphone.

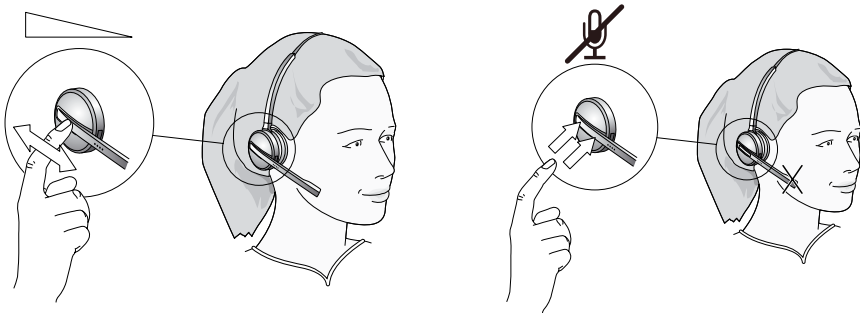


Figure 26: Use the headset's touch panel to control listening volume and microphone mute

You can also control the volume and mute functions using the touchscreen; see *Section 8.5: Setting Active-Call and Audio Preferences* for details.

Note: A tone will sound to indicate each new volume setting; a double tone indicates that you have reached maximum or minimum volume. You will also hear a soft tone in the headset to remind you when microphone muting is active; this signal will repeat occasionally until you reactivate the microphone. If you hang up while the microphone is muted, it will automatically be re-enabled the next time you place or answer a call.

6.7 SWITCHING BETWEEN YOUR PHONE AND HEADSET

It is possible to enable or disable the headset without interrupting your current call.

Desk Phones

To go from desk-phone handset to your headset:

1. If necessary, set the desk phone as the current target for your headset (see also *Section 6.2: The Target Phone Concept*).
2. Open the audio link to the headset by doing one of the following: **tap** the headset's multifunction button; touch the call icon on the base touchscreen; or lift the headset from the base (if enabled, see *Section 8.13: Headset Docking-Operation*).
3. Listen to hear if you are now connected through the headset. If you are not connected, then you may need to press the desk-phone headset button. See also your desk-phone documentation.
4. Place the handset on your desk, but do not hang up, because this will terminate your call.

To go from headset to desk-phone handset:

1. Lift the handset to your ear.
2. Do one of the following:
 - If you are using a traditional phone without a headset button or electronic hookswitch, then close the audio connection to your headset by tapping the headset multifunction button, docking the headset in its cradle on the Jabra PRO base or touching the close-connection icon on the base touchscreen. (This applies also if you are using a GN1000 handset lifter.)
 - If your desk phone has a dedicated headset port and/or electronic hookswitch, then please see your desk-phone documentation for details. In some cases, you must press a button on your desk phone, while in others it will be automatic. Also, some solutions may terminate the connection if you close the audio link to the headset (e.g., by tapping its multifunction button or docking it in its charge cradle), while others may require you to do this before you can speak on the headset. Experiment to find out what works best for you.

Softphones

For softphones, your headset is likely to be your only option, but if other audio devices are connected to your PC, you may be able to switch to them by changing the audio preferences for Windows and/or your softphone program.

Mobile Phones

For mobile phones (Jabra PRO 9470 only), the procedure varies by phone model. Please see your mobile phone documentation for details.

6.8 LAST NUMBER REDIAL

Jabra PRO is able to send a redial command to the current target phone. This feature requires that the target phone supports the redial command; check your phones' documentation for details.

To use last-number redial with a phone that supports it:

1. If necessary, set the appropriate phone as the current target for your headset (see also *Section 6.2: The Target Phone Concept*.)
2. **Double-tap** the headset's multifunction button. Jabra PRO sends the redial command to the selected target phone and opens the audio link.

6.9 MANAGING CALL COLLISIONS AND CALL WAITING

Call collision and call waiting both refer to situations in which you are already on the phone when another call comes in.

- Call Collision

Occurs when you are talking on one phone and a call comes in on a different phone that is also connected to your headset. The headset informs you that the collision occurred by playing the ringtone associated with the incoming phone and updating the touchscreen, but it is not able to place calls on hold. You must therefore choose to answer the new call (thus terminating your current call) or to ignore the new call. See *Section 8.6: Managing Call Collision* for complete details.

- Call waiting

Enables you to place a current call on hold to answer another call coming in (or on hold) *on the same phone*. This feature is available only for selected softphones and mobile phones. For mobile phones this feature depends on your network operator and subscription type. See *Section 8.7: Managing Call Waiting* for complete details about how to manage call waiting.

6.10 LISTENING TO MUSIC

To listen to music from your PC, use the Jabra Control Center and/or its icon in the Windows notification area to open the audio link from the PC to the Jabra PRO base. Provided no other phone lines are active, your headset will then begin to play all of the sounds generated by your PC, including music from your media player. See also the Jabra PC Suite online help for details.

To listen to music from a mobile phone, use the controls provided by your phone as described in its user manual.

Note also the following:

- Music sounds best when you use wideband audio when possible. See *Section 8.11: Narrowband vs. Wideband Audio*.
- If you are using a supported media player and softphone on your PC, then the Jabra softphone driver will automatically pause the music when a call comes in. You must manually restart the music, however.

7. THE JABRA PRO HEADSET

This chapter provides in-depth details about the Jabra PRO headset. See also *Chapter 3: Product Overview* for detailed diagrams.

7.1 HOW TO WEAR THE HEADSET

Jabra PRO headsets are available in a variety of styles, which affect both the headset functionality and the wearing options available to you. Depending on your model, you may be able to wear your headset in any of several styles by attaching accessories to the basic unit.

Headset Style	Jabra PRO Model	Wearing Style Options
Flex	9460	Ear hook Headband Neckband
Flex Duo	9460-Duo	Dual-speaker headband
Midi	9470	Ear hook Headband Neckband

Table 2: Wearing styles available for each model of Jabra PRO headset

All styles can be worn on either the left or right ear (except for the flex duo, which is a headband that provides a speaker for each ear).

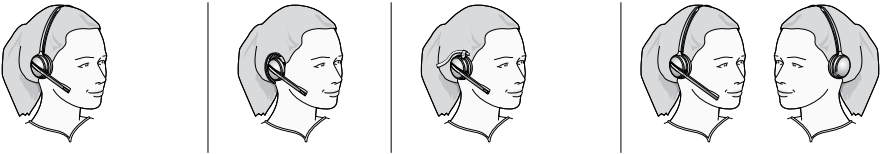
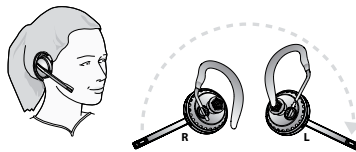


Figure 27: Assembling and wearing the Jabra PRO headset in various styles



Important: Regardless of which wearing style you choose, always be sure to adjust the headset so that the microphone is positioned as close to your mouth as possible. This will maximize the noise-cancelling effect of its microphone and make sure that your voice comes through loud and clear.

Note: If you choose the ear hook, it is important that you adjust its height to suit your ear. This will make a big difference in your comfort when wearing the headset. To do this, slide the attachment up or down until the headset fits most comfortably to your ear. In addition, a choice of small, medium or large earbuds are provided for maximum comfort with the ear hook.

7.2 ATTACHING OR DETACHING A WEARING STYLE

Note: Jabra PRO 9460-Duo headset is always worn as a headband.

Attaching the headband

1. Align the mounting surface of the headset with matching socket on the headband attachment.
2. Press the headset assembly firmly onto the outer side of the headband attachment until it clicks into place (snap-to-click). If you have trouble pressing them together, try to rotate the boom arm about 30° and try again. Refer to the figure in the *section 4.3: "Assemble the Headset"* earlier in this manual.
3. Rotate the headset boom arm for left- or right-ear use as needed. Always position the microphone so that it sits as close to the corner of your mouth as possible when you wear the headset.
4. Adjust the length of the headband to fit snugly around your head.
See also *Section 7.1: How to Wear the Headset* for illustrations.

Detaching the headband

1. Hold the assembly firmly in both hands, with the headset in one hand and the ear-cushion assembly of the wearing-style attachment in the other.
2. Gently pull the headset away from the headband attachment until it comes free. If you have trouble pulling them apart, try to rotate the boom arm about 30° and try again.

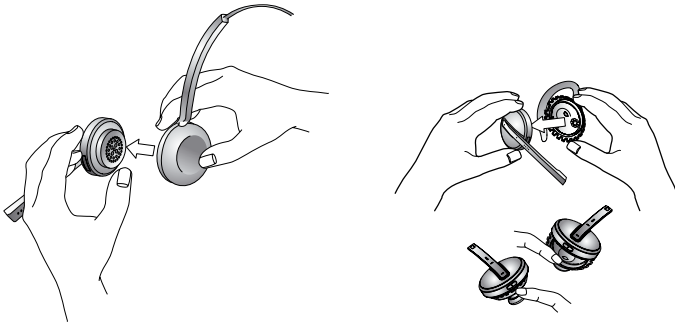


Figure 28: Detaching a wearing-style attachment from the headset

Attaching the ear hook

Note: The ear hook is delivered pre-assembled for wearing on your right ear with the medium sized earbud mounted.

1. Decide whether you want to wear the ear hook on the left or right ear — you might need to pull out the hook itself from its attachment, rotate it 180 degrees and then push it back in to change left/right orientation. Left and right assemblies are shown on the previous page in the figure *"Assembling and wearing the Jabra PRO headset in various styles"*:
The point at which the hook is attached — marked with the text "Jabra" — must always be in front of the hook itself.
2. Try placing the ear hook with an earbud mounted in your ear. If it does not fit snugly in your ear, pull the earbud off the attachment and put on another size (small, medium and large earbuds are delivered as standard.)

3. Try to wear the ear hook and adjust it to fit snugly around your ear. Remember that:
 - the hook itself rotates on the attachment.
 - the hook itself is flexible and can be easily bent to wrap snugly around your ear.
 - the height of the hook relative to its attachment can be adjusted to suit your ear. To do this, slide the attachment up or down.

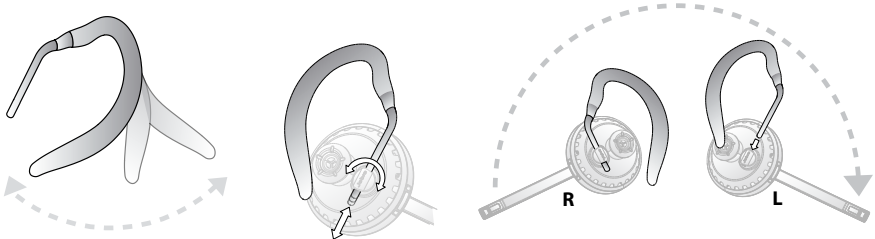


Figure 29: Adjusting the ear hook

4. Take off the ear hook assembly.
5. Align the mounting surface of the headset with the matching socket on the ear-hook attachment. Press the headset assembly firmly onto the outer side of the attachment until it clicks into place (snap-to-click). Refer to the figure in the section 4.3: “Assemble the Headset” earlier in this manual.
6. Turn the headset in the socket to ensure that it is mounted correctly.
7. Put on the ear hook and headset assembly.
8. Turn the headset boom arm so that the microphone is right in front of the corner of your mouth. See also Section 7.1: *How to Wear the Headset* for illustrations.

Detaching the ear hook

1. Hold the headset in one hand and turn the whole assembly to find the one slot on the ear-hook attachment socket that is larger than the others.
2. Apply your thumbnail to the slot and pull the entire ear hook assembly away from the headset.

Attaching the neckband

1. Decide whether you want to wear the neckband on the left or right ear — you might need to pull out the neckband itself from the ear-cushion attachment, rotate the attachment 180 degrees and then push the other end of the band back in to change left/right orientation. Left and right assemblies are shown below:

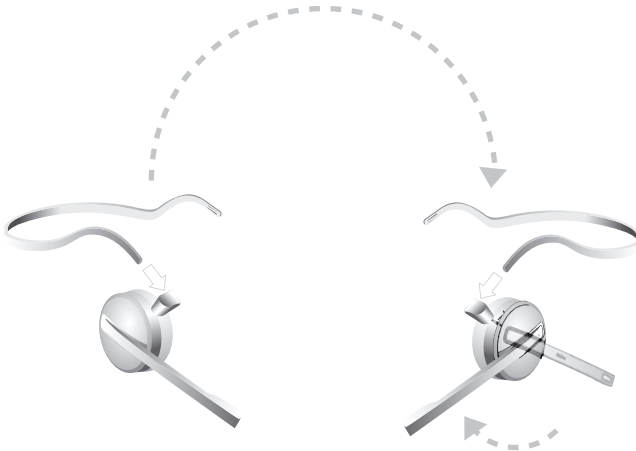


Figure 30: Neckband ready for wearing on the left and right ears

Each end of the neckband has a slot. This slot must be aligned with the notch inside the loop of the ear-cushion attachment when you insert the band.

- Align the mounting surface of the headset with the matching socket on the ear-cushion attachment. Press the headset assembly firmly onto the outer side of the attachment until it clicks into place (snap-to-click). Refer to the figure in the section 4.3: "Assemble the Headset" earlier in this manual. If you have trouble pressing them together, try to rotate the boom arm about 30° and try again.
- Turn the headset in the socket to ensure that it is mounted correctly.
- Put on the neckband and headset assembly.
- Turn the headset boom arm so that the microphone is right in front of the corner of your mouth. See also Section 7.1: *How to Wear the Headset* for illustrations.

Detaching the neckband

- Hold the assembly firmly in both hands, with the headset in one hand and the ear-cushion assembly of the neckband attachment in the other.
- Pull the headset away from the ear-cushion assembly of the neckband attachment until it comes free. If you have trouble pulling them apart, try to rotate the boom arm about 30° and try again.

7.3 HEADSET CONTROLS AND SIGNALS

All Jabra PRO headsets feature a collection of controls and indicators that enable you to manage and monitor your calls. These are:

1. Multifunction button

This button is located near the back of the headset. Through a combination of taps, double-taps, short presses and long presses, you will be able to execute all of the most-needed functions, including answering a call, hanging up, switching between held calls, and more.

2. Touch panel

This touch-sensitive panel is similar to the touch pad included with many laptop computers. It enables you to adjust the speaker volume and mute/unmute the microphone.

3. Headset visual indicator

A multicolor LED lets others see when you are on the phone and also gives feedback for certain types of events, such as low battery, incoming call, etc.

4. Audio signal tones

The headset generates several types of soft signal tones to let you know when you have an incoming call, muted call, call on hold, low battery, or other type of event. It also responds each time you use the multifunction button.

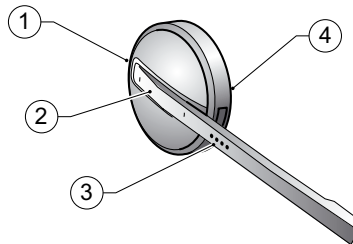


Figure 31: Jabra PRO headset controls and indicators

The Multifunction Button

The table below summarizes the various gestures recognized by the multifunction button. The terms listed in the table are often used in this manual when describing how to use the headset.

Gesture name	How to make it
Tap	Tap and release instantly (not longer than 0.8 seconds).
Double tap	Two quick taps (less than half a second between them).
Press	Press and hold the button for 1 - 3 seconds.

Table 3: Gestures for using the headset multifunction button; the terms here are used throughout this manual

Note: You can hear whether you have tapped / double-tapped / pressed the button as each gesture is identified by a unique tone / series of tones played in the headset. See the table "Headset signal tones and their meanings" for more.

The precise effect of each type of gesture depends on what you are currently doing (e.g., if you are already on a call, which phone is the current target, etc.). The table below summarizes all of the control possibilities presented by the multifunction button.

Function	Tap	Double-Tap	Press (hold 1-3 sec)
Answer incoming call	✓		
Open a connection on current target phone (e.g., go to dial tone; voice-activated dialing)	✓		
Enable voice-activated dialing (when target is a cell phone that supports this)	✓		
End current call (and activate held or incoming call, if any)	✓		
Call the last number dialed on current target phone (supported softphones and mobile phones only)		✓	
Reject incoming call (when already on a call)		✓	
Switch target phone (when no call is active)			✓
Reject incoming call (when no call is active)			✓
Hold current call and switch to held or incoming call (supported softphones and mobile phones only)			✓
Power off / power on			✓ (hold 5 secs)

Table 4: All multifunction button commands

The Touch Panel

The headset features a touch panel that is similar to the touch pad included with many laptop computers. Use it to adjust the volume you hear in your headset and to mute/enable the microphone.

- Slide your finger up the touch panel (away from your mouth) to increase the volume.
- Slide your finger down the touch panel to decrease the volume.
- Double-tap on the touch panel to mute or unmute the microphone.

See also *Section 6.6: Controlling the Speaker Volume and Microphone.*

Headset Signal Tones

The headset uses a variety of soft tones to alert you to events such as an incoming call, multifunction button presses, volume changes, and more. These enable you to keep track of what is going on while you are wearing the headset.

State or event	Tone description	Sample (click to play)
Button tap	A quick medium tone	
Button double-tap	Two button-tap tones	
Button press	The button-tap tone followed by a longer tone	
Turn volume up	A short, high tone that indicates the new volume	
Maximum volume reached	Two short, high notes	
Turn volume down	A short, low tone that indicates the new volume	
Minimum volume reached	Two short, low notes	
Mute	A quick medium tone, rest and quick low tone; repeats occasionally	
Incoming desk phone call	A very fast, high-pitch melody	
Incoming softphone call	A very fast, medium-pitch melody	
Incoming mobile phone call	A very fast, low-pitch melody	
Target changed to desk phone	A slow, high melody; or a human voice announcing "desk phone" in English	
Target changed to softphone	A slow, medium melody; or a human voice announcing "softphone" in English	
Target changed to mobile phone	A slow, deep melody; or a human voice announcing "mobile phone" in English	
Call ended	A quick melody ending on a low note	
Battery low	Two very quick, low tones; repeats occasionally	
Calls on hold via call waiting	Two slow medium-pitch notes, a long rest, and then two more; repeats occasionally	
Pairing succeeded	Three slow tones ending on a medium-high note	
Error (such as pairing failed)	Three quick tones followed by a lower long tone	

Table 5: Headset signal tones and their meanings









Choosing Voice or Tones for Target indicators

The headset is capable of playing either a tone or a human voice when you change the target phone, thus telling you what the new target is. The human voice is always in English, regardless of your other language settings. By default, the human voice will be played. However, if you do not like hearing the English voice, you can switch to using the tones.

To change this setting, use the Jabra Control Center program of the Jabra PC Suite running on your PC. See the online help for complete details.

Headset Visual Indicators (LED)

The headset includes a multicolor LED which indicates the state of the headset, as outlined in the table below. During charging, the headset state LED indication is shown interspersed with a constant yellow light (which shows the headset is charging). Once fully charged, only the state LED indication is shown (no charging light while fully charged).

Headset state	LED when battery level is good	LED when battery level is low
Idle	Blue 200ms Off 4800ms Repeats for 60 seconds 	Red 100ms Off 4900ms Repeats indefinitely 
Not connected	Green 300ms Off 300ms Green 300ms Off 300ms Green 300ms Off 1500ms Repeats for 60 seconds 	Red 100ms Off 500ms Red 100ms Off 500ms Red 100ms Off 1700ms Repeats indefinitely 
Call active	Blue 100ms Off 300ms Blue 100ms Off 2000ms Repeats indefinitely 	Red 100ms Off 300ms Red 100ms Off 2000ms Repeats indefinitely 
Ringing	Blue 100ms Off 300ms Blue 100ms Off 1000ms Repeats indefinitely 	Red 100ms Off 300ms Red 100ms Off 1000ms Repeats indefinitely 



















Headset state	LED when battery level is good	LED when battery level is low
Power turned on	Green 100ms Off 100ms Repeats to a total of 4 times  	Green 100ms Off 100ms Repeats to a total of 4 times  
Power turned off	Red 100ms Off 100ms Repeats to a total of 4 times  	Red 100ms Off 100ms Repeats to a total of 4 times  
Pairing	Constant blue  	Constant red  
Pairing succeeded	Blue 100ms Off 100ms Repeats to a total of 5 times  	Red 100ms Off 100ms Repeats to a total of 5 times  
Charging	Constant yellow  	
Fully charged in cradle	no light	N/A

Table 6: Headset visual signals and their meanings

7.4 BATTERY INDICATORS, RECHARGE AND REPLACEMENT

Battery indicators

The headset and touchscreen base indicate the current headset battery level as follows:

- Whenever the battery is low, the headset multicolor LED will display red for all of its usual signals.
- While the battery is low, you will hear an audio signal (two quick, low tones) every minute or so in the headset.
- When the headset is paired with a touchscreen base, you can read the current battery level on the touchscreen.

Recharging the Headset

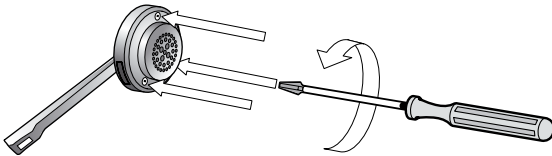
To recharge your headset battery, place the headset in its cradle on the base. See also *Section 4.3: Preparing the base and Assembling the Headset*.

How to replace the battery

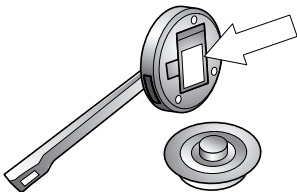
If you begin to notice that you get significantly less talk time between battery charges, it might be time to replace the battery.

To replace the headset battery:

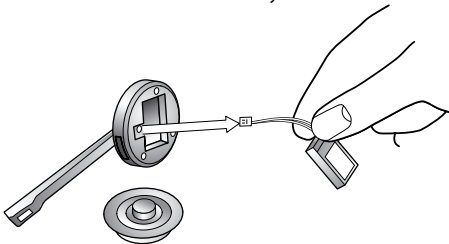
1. Order a Jabra PRO battery-replacement kit from Jabra (contact your Jabra representative or see our web site for details).
2. Remove the wearing-style attachment from your headset (see also *Section 7.2: Attaching or detaching a Wearing Style*).
3. Place the headset down on a table with the speaker facing up.
4. Use the screwdriver supplied with the battery-replacement kit to remove the three screws indicated in the figure below.



5. Carefully tilt the speaker plate up, allowing it to rotate around the edge where the boom arm sticks out.



6. The battery is the rectangular component now visible in the center of the headset body. Gently pry the battery up and out of the headset. The battery will remain attached to the headset by a pair of very thin wires.
7. Grab the two wires that connect the old battery to the headset and gently pull them straight away from the socket inside the headset until they are free.



8. Align the wired connector for your new battery with the socket inside the headset and press it all the way in. If you have trouble, you might have the connector upside down — try the other way.
9. Fold the wires beside the new battery in the wire groove and press the battery down into place in the headset. Ensure that the battery label faces upwards for the correct orientation.
10. Replace the speaker plate and insert and tighten each of the three screws you removed at the start of this procedure.

7.5 STAYING WITHIN RANGE

Jabra PRO supports a maximum range of up to 150m. In practice, you will probably find the range to be somewhat shorter due to physical obstructions and electromagnetic interference.

The sound in your headset will slowly deteriorate as you move farther from the base; move back into range to restore sound quality. If you move all the way out of range while talking, all sound will stop but your call will be held open at the base for 60 seconds, giving you a chance to move back in range; after this time the current call will be terminated.

If you remain out of range for a long time, you may need to re-establish the DECT connection manually when you return (e.g., by docking the headset to the base).

7.6 NOISE BLACKOUT™ MICROPHONE (JABRA PRO 9470)

The Jabra PRO midi headset features an advanced, two-microphone Noise Blackout™ system that will help ensure that your voice will be clear and easy to understand — even when you are sitting in a crowded office or other noisy environment. It works by using a pair of directional microphones: one facing towards your mouth and one facing away. These two signals are combined inside the headset, which subtracts the room-noise signal from the voice signal, leaving only your voice behind.

This system works best when the headset's voice microphone is placed as close as possible to your mouth and when the out-facing microphone is completely unblocked. Avoid covering the out-facing microphone with your hand or any other substance. (Some users assume that blocking the out-facing microphone will reduce noise, but the opposite is true!)

7.7 NOISE-CANCELLING MICROPHONE (JABRA PRO 9460 AND 9460-DUO)

The Jabra PRO 9460 and 9460-Duo feature electronic noise cancelling, which will help reduce the noise transmitted by your headset, making your voice easier to hear and understand. For best results, always make sure to place the microphone as close to your mouth as possible.

8. THE JABRA PRO TOUCHSCREEN BASE

This chapter describes how to work with the features of the Jabra PRO Touchscreen Base. See also *Chapter 3: Product Overview* for detailed diagrams.

8.1 BASE CONNECTIONS AND SETUP

For details about how to set up the base and connect it to your various phones, please see *Chapter 4: System Setup and Connections*.

8.2 USING THE TOUCHSCREEN

Jabra PRO Touchscreen Base features a color touchscreen that enables you to configure the solution, set preferences and manage everyday calls. Its display changes to adapt to the task at hand. Touch the screen with your finger to activate icons, scroll down a page, select a target device and execute other tasks.



1. Status bar:

- headset battery level indicator
- full HD (High Definition) audio. The base is set to transmit wideband audio to the headset. See "Setting General User Preferences"
- tape icon; call recording is enabled. See "Recording your Calls"
- two headsets icon; conference calling is enabled as both a primary and secondary headset are paired with the base. See "Pairing and Connecting the Base and Headset" and "Conference Calling"
- speaker icon; opens the settings menu. See "Setting Active Call and Audio Preferences"

2. Activity window:

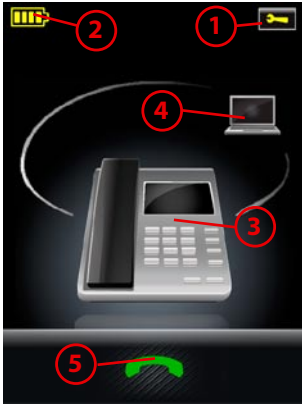
- the contents of this area will change depending on what you are doing. Usually it indicates your current call status by displaying icons that show which type of phone you are using (desk, soft or mobile) and whether you have any calls on hold. A number of button icons may also appear here. These will often include target-phone options or forward/back icons when you are working through a series of settings. Touch the screen to "press" any of the button icons here.

Figure 32: Touchscreen elements

The entire area of the touchscreen is fully dynamic, both in terms of what it shows and where you can touch. The touchscreen turns around its bottom-front edge axis so you can adjust it to your preferred viewing angle.

8.3 STANDARD OPERATION

During normal operation, the touchscreen shows status information about your headset, displays the current target phone and indicates its status. From here you can answer an incoming call, end the current call, access your base settings, choose a target phone and open an audio link to the current target phone.



1. **Settings icon:** touch here to go to the settings menu for your base and headset.
2. **Battery indicator:** indicates the current charge level of your headset.
3. **Current target phone:** shows the current target phone and indicates its status (ringing, online, etc.). This is the phone to which you will connect if you **tap** the headset multifunction button or touch the activate-audio-link icon.
4. **Other phones:** touch the appropriate icon here to change the current target phone — or **press** the headset multifunction button when no call is active to cycle through available phones.
5. **Activate audio link:** touch here to answer an incoming call or activate the audio link to the current target phone — or **tap** the headset multifunction button when no call is active.

Figure 33: Touchscreen controls for standard operation

8.4 PAIRING AND CONNECTING THE BASE AND HEADSET

To enable secure wireless communication between the Jabra PRO headset and its base, you must pair the two units. Once paired, they will find, connect and communicate with each other as needed whenever they are in range and turned on, but they will ignore all other DECT devices in the area.

Pairing the DECT Base and Headset

The headset can only be paired with one base at a time, while the base is able to pair with one primary headset and an optional and temporary secondary headset. The secondary pairing enables you to share your conversation with another headset user to support conference calling (see *Section 8.12: Conference Calling*). You cannot pair the Jabra PRO base or headset with other types of DECT products.

To pair your base and headset:

1. Dock the headset to the charging cradle of the target base.
2. If the headset is not already paired with that base, then the touchscreen will ask you if you would like to do one of the following:
 - **Pair as primary:** touch this icon to make the current headset the new primary device for the current base. This will remove any previous primary headset.
 - **Pair as secondary:** touch this icon to make a temporary connection to the current headset. This connection will only last until the end of the next (or current) call. The current primary headset will be kept and all audio will be shared with both headsets.
 - **Do not pair:** touch this icon to charge the current headset without pairing with it.
3. Touch the icon of your choice and you are done.

Note: A similar pairing mechanism is also used by Bluetooth devices. Jabra PRO 9470 supports Bluetooth for the purpose of adding a mobile phone to your headset solution. However, the Bluetooth pairing is completely independent of the DECT pairing mechanism described above. See *Section 9.2: Pairing and Connecting with Other Bluetooth Devices* for details.

Managing the DECT Connection


Once you have paired the base and headset, the base manages the connection automatically even as you take the headset out of range and/or turn off the devices from time to time. The connection will usually activate itself again automatically the next time the Jabra PRO Base and headset are turned on and in range. However, Jabra PRO also provides controls for managing the connection manually if necessary.

If you would like to drop the connection from the base to your headset, use the base touchscreen menus as described in *Section 8.8: Setting General User Preferences*.

To connect a base and headset manually, do one of the following:

- Place the headset into its recharge cradle on the base.
- Use the base touchscreen menus. See *Section 8.8: Setting General User Preferences* for instructions.

8.5 SETTING ACTIVE CALL AND AUDIO PREFERENCES

When you are on a call you can access your call options and audio preferences by touching on the  icon in the upper right-hand corner, as shown below. This opens the **Call Options** menu.



1 Mute: enables you to mute/unmute the microphone on your headset. You can also do this by double-tapping the touch-panel on the side of your headset.

Figure 34: Finding your active-call and audio preferences

To view/edit the settings available here, touch one of the following icons from the **Call Options** menu:

- **Speaker volume:** enables you to adjust the level of the sound you hear. You can also do this using the touch-panel on the side of your headset.
- **Hold:** enables you to put your current call on hold. Once you put a call on hold, this call option is removed.
- **Enable Recording:** enables you to manage the recording of your conversation to a file on your PC. See also *Chapter 10: Recording Your Calls* for complete details about this feature.
- **Tone setting:** enables you to select one of three pre-sets for the sound you hear in your headset: **Treble**, **Normal** and **Bass**.

8.6 MANAGING CALL COLLISION

When you have more than one phone connected to your base, it becomes possible that more than one call will become active simultaneously. This might occur under the following circumstances:

- You are talking on one phone (e.g., your desk phone) when a call comes in on one of your other phones (e.g., your mobile phone).
- You press the connect button on your mobile-phone keypad or softphone graphic interface (thereby opening a connection) while you are talking on one of your other phones.

Events such as these are called *call collision*, because here we have two or more different phones competing for access to your single headset. When a collision occurs, you can choose to answer the incoming call or reject it, but you are not able to place either call on hold.

In the event of a call collision, the following occur:

- The headset plays the ringtone associated with the incoming phone.
- The touchscreen displays the incoming number (if possible).
- The touchscreen shows which other phone is ringing and provides controls for handling the call, as shown in the figure below.
- Call-collision controls for the headset multifunction button become active, as listed in the figure below.



- 1. Current phone:** the phone on which you are talking.
- 2. Caller ID:** the incoming call number is shown here, if available.
- 3. Ringing phone:** the phone on which the incoming call is arriving.
- 4. Accept new:** touch here — or **tap** the headset multifunction button — to terminate your current call and answer the incoming call.
- 5. Reject new:** touch here — or **double-tap** the headset multifunction button — to remain on your current call and terminate the incoming call.

Figure 35: Touchscreen information and options for handling call collision

Note: call collision is not the same as call waiting, which is sometimes available when you are talking on one phone and a call comes in on that same phone. See Section 8.7: *Managing Call Waiting* for details about how this is handled.

8.7 MANAGING CALL WAITING

Call waiting refers to the ability to place a current call temporarily on hold to answer another call coming in on the same phone. It is a feature that is provided by your phone company or softphone program, which means that it is largely external to the base or headset. However, you are able to manage call waiting using your headset multifunction button and/or touchscreen for the following types of phones:

- Mobile phones with call-waiting features and full support for the hands-free Bluetooth profile
- Softphones with call-waiting features that are also specifically supported by a Jabra driver

It is not possible to manage call waiting on a desk phone from the base or headset; in this case, you must use the physical controls of your desk phone if it supports call waiting. Similarly, if you are using an unsupported softphone, then you must use your softphone's native interface to manage its call-waiting features.

When call waiting is triggered by a new incoming call, the following occur:

- The standard call-waiting tone will sound in your headset.
- The touchscreen displays the incoming number (if available) and provides controls for handling the new call, as shown in the figure below.
- Call-waiting control is enabled for the headset multifunction button. The commands for this are also mentioned in the figure below.

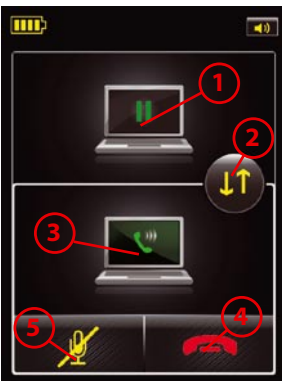


1. **Current phone:** the phone on which you are talking.
2. **Caller ID:** the incoming call number is shown here, if available.
3. **Ringing phone:** the phone on which the incoming call is arriving.
4. **Accept new:** touch here — or **press** the headset multifunction button — to put your current call on hold and answer the incoming call.
5. **Reject new:** touch here — or **double-tap** the headset multifunction button — to remain on your current call and reject the incoming call.

Figure 36: Touchscreen controls for managing call waiting when a new call arrives

While call waiting is active (i.e. you have calls on hold), the following occurs:

- The touchscreen displays the call-on-hold icon and provides controls for switching between active and held calls as shown in the figure below.
- Call-waiting control is enabled for the headset multifunction button. The commands for this are also outlined in the figure.



1. **Held-call icon:** this icon represents the first held call in the queue.
2. **Hold and switch:** touch here — or **press** the headset multifunction button — to put your current call on hold (at the back of the queue) and activate the first held call in the queue.
3. **Active-call icon:** this icon represents the currently active call, showing the phone type.
4. **End and switch:** touch here — or **tap** the headset multifunction button — to terminate your current call and activate the next held call.
5. **Mute:** enables you to mute/unmute the microphone on your headset. You can also do this by double-tapping the touch-panel on the side of your headset.

Figure 37: Touchscreen controls for managing call waiting while one or more calls are on hold

If you have an active call, with no calls waiting, and you then put the active call on hold, the red (end call) button is removed from display. This means that you must re-activate the held call before you can end it (press the green arrow). See the figure below:



Figure 38: The current (active) call is put on hold; no other calls are waiting

Note: call waiting is not the same as call collision, which is what happens when you are talking on one phone (e.g., your desk phone) and a new call comes in on another phone (e.g., your mobile phone). See *Section 8.6: Managing Call Collision* for details about how this is handled.


Note: if call waiting is active when a call collision occurs, then the touchscreen will indicate the collision and enable you either to ignore the incoming call or to answer it, thus dropping all of the active and held calls being managed by call waiting. The headset, however, does not provide a tone to inform you of a call collision if you have held calls; it essentially ignores the colliding call until there are no more calls on hold.

8.8 SETTING GENERAL USER PREFERENCES

When you are not using the headset, you are able to access the general user preferences on the base. Use this function to adjust your hearing-protection settings, switch to wideband or narrowband audio, control call recording, set the screen language, disconnect the headset or re-start some or all of the setup wizard.



Figure 39: Finding the general user preferences

1. Wait until you have no active calls and will not need the phone for a few minutes.
2. Touch the  icon in the upper-right corner of the touchscreen (available only when all connected phones are idle).
3. The **Settings** menu opens. Select one of the following:
 - **Personal Setup:** touch here to adjust display brightness, dimming timeout, set base-speaker volume for your desk-, mobile-, and softphone ringtones, adjust touch click-volume and to select tone or voice tags.
 - **IntelliTone:** touch here to go to the settings for protecting your hearing. See also *Section 2.2: Protecting your Hearing with SafeTone™* for complete details about this feature.
 - **Wideband:** touch here to set the base to transmit wideband or narrowband audio to the headset. See also *Section 8.11: Narrowband vs. Wideband Audio* for details about this feature.
 - **Language:** touch here to change the language displayed for the touchscreen text.
 - **Disconnect HS:** touch here to break the wireless connection from the headset to the base. You might do this if you want to use a different headset.
 - **Enable / Disable Recording:** Determines whether audio from your desk phone and mobile phone calls are copied to the PC for recording. The equivalent setting is available in the Audio tab for your Jabra device in Jabra Control Center. Note that the recording feature is disabled by default. See also *Chapter 10: Recording Your Calls* for more on this feature.
 - **Disable / Enable audio detection:** Determines whether the audio link opens automatically when sound is detected on the USB interface. The equivalent setting is available in the Audio tab for your Jabra device in Jabra Control Center. Audio detection is enabled by default.
 - **Software Update:** Provides information on where to find the latest firmware versions for downloading to your Jabra headset and base.
 - **Advanced:** touch here to run some or all of the setup wizard for configuring the connection from the base to your desk phone, mobile phone and/or computer. See also *Section 8.9: Re-running the Setup Wizards*.
 - **About:** touch here to view a few technical details about the base, such as firmware revision, copyright details, etc.
4. Follow the instructions on your screen for the option you selected.

8.9 RE-RUNNING THE SETUP WIZARDS

The very first time you turn on the base, a setup wizard launches automatically, helping you to configure the connection to your desk phone, mobile phone and/or computer. Thereafter, the base starts normally each time you turn it on. However, if you would like to revisit your desk-phone, computer and/or mobile-phone setup, you can do so at any time. In each case, an on-screen wizard will help you make the relevant settings.

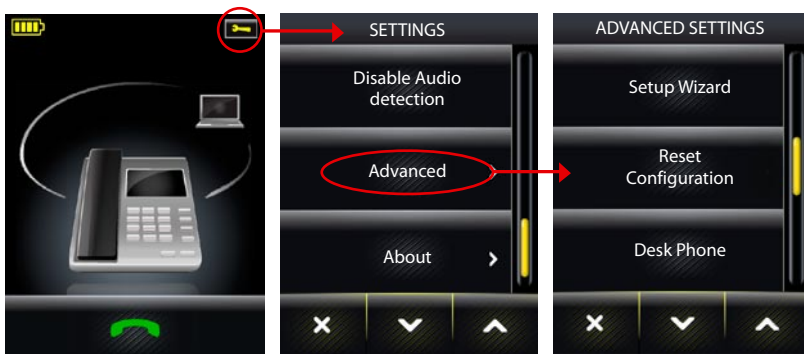



Figure 40: Finding the setup wizards

To run some or all of the setup wizard:

1. Wait until you have no active calls and will not need the phone for a few minutes.
2. Touch the  icon in the upper-right corner of the touchscreen (available only when all lines are idle).
3. The **Settings** menu opens. Touch the **Advanced** icon here.
4. The **Advanced Settings** menu opens. Select one of the following:
 - **Setup Wizard:** runs the whole setup wizard.
 - **Reset Configuration:** touch here to clear all base settings (only) and launch the complete setup wizard.
 - **Setup Desk Phone:** touch here to reset your desk phone configuration (including all clear dial-tone switch, electronic hookswitch and microphone-level settings). The desk phone part of the setup wizard then launches. All other settings will be kept.
 - **Setup Soft Phone:** touch here to reset your softphone configuration and re-launch the softphone part of the setup wizard. All other settings will be kept.
 - **Setup Mobile Phone:** touch here to reset your mobile phone configuration. The mobile phone part of the setup wizard then launches. All other settings will be kept.
5. Follow the instructions on your screen for the wizard you selected. See also *Section 4.1: Setup Overview and Background* and *Section 4.2 The Quick-Start Setup Wizard* for background information that may help as you work through the setup wizard.

8.10 BASE AUDIO INDICATORS

The base includes a small speaker, which enables it to supply one or both of the following:

- A ringing sound to indicate an incoming call (can be especially useful when you are using a softphone or have the ringer disabled on your desk or mobile phone).
- A soft clicking sound to provide feedback when you use the touchscreen. This can help make using the touchscreen feel more like working with a physical control panel.

You can choose to enable/disable one or both of the above audio features by adjusting your personal settings. See *Section 8.5: Setting Active-Call and Audio Preferences* for details about how to do this.

8.11 NARROWBAND VS. WIDEBAND AUDIO

The Jabra PRO headset supports both wideband and narrowband audio, but uses narrowband by default. You should consider using wideband if you listen to music from your PC and/or if your voice-communication channels also support it. Note, however, that wideband audio reduces battery talktime.

You are able to configure narrowband/wideband operation individually for each phone type.

See *Section 8.8: Setting General User Preferences* for details about how to find these settings.

8.12 CONFERENCE CALLING

The Jabra PRO Touchscreen Base enables you to connect a secondary Jabra PRO headset to the base, thereby adding another person to the conversation.

To begin a conference call, dock the secondary headset with the base that will host the call. You can do this either just before the call or at any time during the call. The touchscreen will ask you to confirm the new connection (see Section 8.4: *Pairing and Connecting the Base and Headset* for a detailed description). Thereafter, all audio will be shared by both connected headsets until one of the following occurs:

- The primary headset user hangs up.
- The secondary headset user **taps** the multifunction button on his or her headset.
- The secondary headset user docks his or her headset to its own base.

On disconnect, the secondary headset is permanently removed from the host base. You must repeat the full secondary-pairing procedure each time you want to have a conference call.

8.13 HEADSET DOCKING-OPERATION

Whenever the headset is docked correctly in the base's cradle, the successful electrical connection to the base is indicated by an icon in the touchscreen's status bar as shown below:



Figure 41: The touchscreen indicates that the headset is docked successfully

Docking operations (lifting and replacing the headset to/from the recharge cradle) simulate the pick-up and hang-up operations of a traditional phone as follows:

- Whenever you dock the headset to the base, all current calls will be terminated.
- **If the base is able to detect that a connected phone is ringing**, then lifting the headset will answer that line and open an audio connection to the ringing phone. However, not all types of phone support ring detection.

8.14 THEFT PROTECTION

The base includes a slot for attaching a security cable, which can help prevent the base from "accidentally" being removed from your desk while you are not paying attention. The slot meets the Kensington Security Slot standard, which is commonly found on laptops and laptop docking stations.

To secure the base to your desk, purchase any safety cable intended for use with the Kensington Security Slot standard and follow the instructions included with the cable.

8.15 DEALING WITH DENSITY ISSUES

DECT technology uses low-power radio technology for wireless transmission. Because DECT uses a dedicated radio-frequency band, it is relatively immune to interference from other products using radio technologies commonly used in offices such as wireless routers or wireless networks. Likewise, DECT will not interfere with WiFi networks.

You might, however, experience some performance degradation if you install many Jabra PRO headsets in one area – the limits are explained below. DECT has a built-in automatic channel-allocation which attempts to allocate channels in a way which minimizes the likelihood of interference. The number of channels is always limited, which may have some implications for large scale deployment.

Performance issues manifest themselves as audible clicks and pops. In the most severe cases, they manifest themselves as the inability for some headsets to establish the wireless link.

The basic limit you should be aware of is the number of headsets in one area before DECT channels are re-used:

- 80 headsets for EU DECT (normal audio), or 40 headsets for EU DECT (wideband audio)
- 45 headsets for US DECT (normal audio), or 22 headsets for US DECT (wideband audio)

The use of wideband audio gives an additional constraint as wideband audio reduces the number of headsets by a factor of 2.

If the number of headsets in any one area is below the limit indicated above, there should be no performance issues. Even in those lower density situations, you are advised to separate bases from each other by at least 2 - 4m.

If you exceed the density limits, you should configure the products to operate in low-power mode. You must plan using the following conservative average areas per headset and base-to-base distances:

- 25m² – 49m² for EU DECT (i.e 5 – 7m between bases).
- 49m² – 100m² for US DECT (i.e. 7 – 10m between bases).

Be aware of the fact that large metal objects or large glass windows, especially those covered with a metallic layer, create many radio reflections. This forces you to plan even more conservatively. The average areas are valid for an average headset-to-base distance of < 5m — otherwise more conservative planning is needed.

The area referred to above depends on the building layout. It could be an open space office, or a set of collocated offices separated by lightweight walls. Offices far apart, say >100m apart, or shielded by heavy concrete walls should not be considered one area. The above planning figures are valid if most users are near their bases (< 3m distance). If most users are > 5m away from their bases, you should roughly double the recommended area.

9. USING JABRA PRO 9470 WITH A MOBILE PHONE

Note: this chapter applies only to Jabra PRO 9470.

9.1 JABRA PRO BLUETOOTH SUPPORT

The Jabra PRO 9470 Base features Bluetooth support, which means that you can place and receive calls through your Bluetooth-enabled mobile phone using your headset. The headset, however, is based on DECT wireless technology, which means that you cannot pair it directly with your mobile phone.

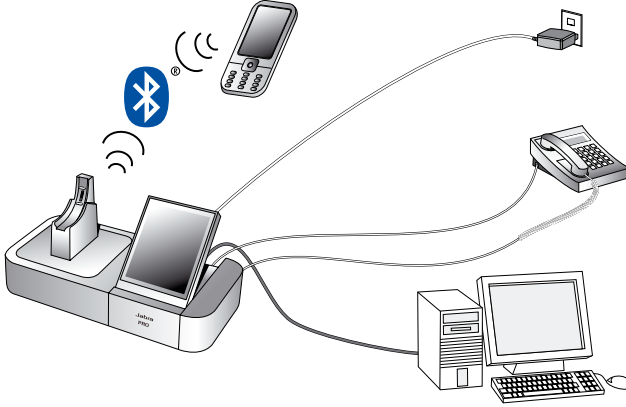


Figure 42: Jabra PRO 9470 Base connections with Bluetooth

From the mobile phone's point of view, the Jabra PRO 9470 Base looks just like a standard Bluetooth headset with hands-free, headset and phone-book access profile support. The features available to you will depend on which of these are also supported by your mobile phone.

When using your headset with your mobile phone, you should keep the mobile phone on your desk somewhere close to the base. Most mobiles use Bluetooth Class 2, which supports a range of up to 10m. The Jabra PRO 9470 Base also supports Bluetooth Class 2.

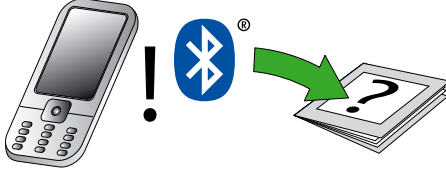
See *Chapter 6: Daily Use — Calling, Answering and Hanging Up* for complete details about how to use your headset together with your mobile phone and other types of phones for day-to-day calling.

9.2 PAIRING AND CONNECTING WITH OTHER BLUETOOTH DEVICES

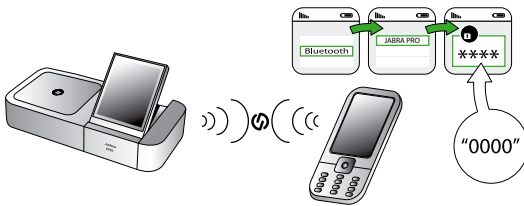
Pairing the Base with a Mobile Phone

To use Bluetooth, you must set up the wireless communication between the Jabra PRO 9470 Base and your mobile phone by *pairing* them. The setup wizard helps you to do this during the initial setup but you can run the wizard at any later time.

1. Launch the mobile-phone part of the setup wizard on the Jabra PRO base as described in *Section 8.9: Re-running the Setup Wizards*. This puts the base into pairing mode, which causes it to advertise itself as available for pairing.
2. Make sure that Bluetooth is active on your mobile phone and put your phone into Bluetooth pairing mode. The exact procedure for doing this varies by mobile phone manufacturer and model — see your mobile phone manual for details.



3. Your phone now looks to see if any nearby Bluetooth devices are advertising themselves for pairing. Use your phone's controls to identify and select the "Jabra PRO 9470" device. Your phone might also ask for the headset's pass code. The pass code for all Jabra devices is 0000 (four zeros).



4. Your phone attempts to connect to the base and then shows you the result of the attempt. If the attempt fails, please try again. If you are still having trouble, please check your mobile phone documentation and/or contact technical support for Jabra and/or your mobile phone.

Note: All communications between your Jabra PRO 9470 Base and your mobile phone are encrypted, so others will not be able to intercept and understand your conversation. Establishing this encryption is an important part of the pairing process.

Managing Bluetooth Connections

Just because two devices are *paired*, does not necessarily mean they are *connected*, which means that the link between them is active. Usually, the base manages its Bluetooth connection automatically even as you take the mobile phone out of range and/or turn off the devices from time to time. However Jabra PRO does provide controls for managing the connection manually if necessary, as described below.

To drop the connection from the base to your mobile phone (for example, because you would like to connect your mobile phone to another device), do one of the following:

- Use the base touchscreen menus as described in *Section 8.8: Setting General User Preferences*.
- Use the menu system on your mobile phone as described in your phone's documentation.

If two paired devices are turned on and in range but fail to connect automatically, you can connect manually using the base and/or mobile phone menu commands.

9.3 FORCING RECONNECTION/DISCONNECTION VIA THE TOUCHSCREEN

If the base — and therefore also the headset — loses the connection to the mobile phone (e.g. if you take it out of range) it periodically attempts to reconnect — every 15 secs for the first 3 hours and then every 40 secs indefinitely. You can instead force the headset to reconnect with it via the touchscreen base. The headset must be within range of the base for this to happen.

Consider the figure below:



Figure 43: Mobile phone connection is lost

The mobile phone icon is greyed out, indicating that the connection is lost. To reconnect manually, do the following:

1. Touch the greyed out mobile phone icon to make it the target. See the figure below:



Figure 44: Mobile phone is the target

2. Touch the Bluetooth button on the mobile phone icon. This causes the base to start reconnecting to the mobile phone, indicated by the flashing Bluetooth icon. See the figure below:



Figure 45: Mobile phone is the target

3. When the mobile and base are reconnected — which means that the connection to the headset is also restored via the base — the mobile phone target icon is no longer greyed out, as shown in the figure below:



Figure 46: Mobile phone and base are reconnected

Conversely, if you want to force the headset to disconnect the mobile phone, do the following:

1. Touch the mobile phone target icon to view the **Mobile Phone** menu. See the figure below:



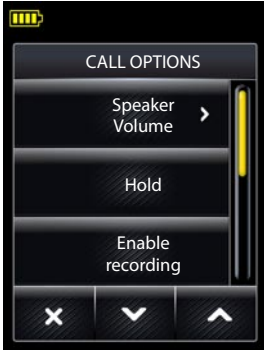
Figure 47: Mobile Phone menu

2. Touch **Disconnect**. This causes the base (and also the headset) to disconnect the mobile phone, indicated by greyed out target icon with the Bluetooth button. See figure 44 above.
3. Touch a different phone icon to select a different (connected) target. Suppose you select the desk phone as the new target; the touchscreen is as shown in figure 43 above.

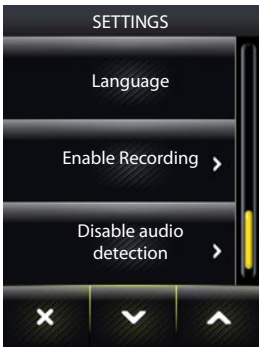
10. RECORDING YOUR CALLS

The Jabra PRO touchscreen base enables you to record your conversations using third-party software on your PC. Controls for working with this feature are included in the touchscreen menus.

IMPORTANT: Never record conversations with people without first informing them that you are doing so and getting their permission. Recording people surreptitiously may be against the law and can also lead to law suits.



There are settings to enable recording both in the Call Options menu (see section "Setting Active Call and Audio Preferences") and the Settings menu (see section "Setting General User Preferences"). Refer to the menus shown here on this page.



The setting in the Settings menu is the default value (recording enabled or recording disabled) that applies to any call. The equivalent setting is available in the Audio tab for your Jabra device in Jabra Control Center.

For an active call it is then possible to "override" this default by accessing the Call Options menu and either enable or disable recording. Note that the setting in Call Options only applies to the current active call.

11. FAQs AND TROUBLESHOOTING

Q HOW CAN I USE MY HEADSET WITH MY MOBILE PHONE? (JABRA PRO 9470 ONLY).

- A To be able to do this, you need to pair the Jabra PRO 9470 base with your mobile phone (your headset is based on DECT and cannot be paired directly with your mobile phone). Do the following:
- Refer to the section “Re-running the Setup Wizards” which explains how to launch the mobile phone part of the setup wizard. This puts the headset’s base into pairing mode, which causes it to advertise itself as ‘available for pairing’.
 - Make sure that Bluetooth® is active on your mobile phone and put it into Bluetooth® pairing mode. The exact procedure for doing this varies according to brand and model. See your user manual for details.
 - Remember that the headset identifies itself as “Jabra PRO 9470” — you need to find and select this on your phone. You might also be prompted to enter the pass code “0000” (four zeros) to accept pairing. If you need more on this, see the section called “Using Jabra PRO 9470 with a mobile phone” in the user manual.

Q HOW MANY BLUETOOTH® DEVICES CAN I HAVE CONNECTED TO THE JABRA PRO 9470 BASE?

- A Only one. The Jabra PRO 9470 base supports Bluetooth® so that you can use your mobile phone with your headset.

Q HOW DO I PAIR MY HEADSET WITH THE JABRA PRO 9400 BASE?

- A If you dock a Jabra PRO 9400 base and headset that are not paired, the touch screen asks if you would like to pair the headset — either as a primary or secondary device. If you choose to pair it as secondary, the connection is temporary, lasting only until the end of the next (or current call). This feature is meant to facilitate conference calling.
- Touch the ‘confirm’ icon to pair them; touch the ‘cancel’ icon to prevent pairing (while still charging the headset). If you dock a headset to a Jabra PRO 9400 base with which it is already paired, no pairing notification appears. For more information, see the section called “Pairing and Connecting the Base and Headset” in the user manual.

Q CAN I PAIR MY HEADSET DIRECTLY WITH A THIRD-PARTY DECT PHONE?

- A No, you can only pair the headset with a Jabra PRO 9400 base (it is not Generic Access Profile (GAP) compliant). This is because Jabra PRO 9400 uses an enhanced version of the DECT standard, thereby enabling many of its advanced call-handling features. These enhancements are not supported by third-party manufacturers.

Q WHY DOESN'T MY COMPUTER DETECT THE JABRA PRO 9400 BASE?

- A Try connecting the base to another USB port on the PC. Also, please note that it is recommended to have a direct connection - i.e. with no USB hub in between.

Q WHY DOESN'T MY HEADSET WORK WITH MY DESK PHONE / SOFTPHONE / MOBILE PHONE (JABRA PRO 9470 ONLY)?

- A Please check the following:
- Make sure the headset is charged. The LED lights a constant yellow color while charging, then shows no light at all (only state indication) when fully charged.
 - Make sure the headset is within range of the base (up to 150m) and that the mobile is within range of the base (up to 10m).
 - The base / mobile phone and the headset may no longer be paired. Refer to the questions about pairing these devices, above.

Q NOTHING HAPPENS WHEN I TRY TO USE MY DESK PHONE.

- A Check the following:
- Make sure the Jabra PRO 9400 base is powered on (check that the touch screen is on).
 - Make sure the desk phone is the current target. See the section called “The Target Phone Concept” for more.
 - Make sure the audio link to the desk phone is active (e.g., by tapping the headset multifunction button or touching the activate-audio-link icon on the touch screen)
 - Make sure that the telephone has an active connection to the phone network (i.e. its handset is off the hook or its headset button is pressed).
 - Re-run the desk phone set-up wizard.

Q I CANNOT HEAR ANYTHING IN MY HEADSET WHEN USING MY MOBILE PHONE. (JABRA PRO 9470 ONLY)

A Try the following:

- Make sure the two devices are paired and connected. See the section “Using Jabra PRO 9470 with a mobile phone” in the user manual for more information.
- Increase the speaker volume on the headset by sliding your finger up the touch-sensitive panel on the side of the headset.

Q I HEAR A LOW NOISE IN THE HEADSET WHEN THERE IS SILENCE AT THE OTHER END?

A Your headset is probably using one of the highest volume settings. Decrease the speaker volume on the headset by sliding your finger down the touch-sensitive panel on the side of the headset.

Q I HEAR MYSELF WHEN I TALK USING MY DESK PHONE. WHAT CAN I DO?

A This probably means your transmission volume is too high. Set the transmission volume on your desk phone to a lower level.

Q THE SOUND IN THE HEADSET IS POOR QUALITY OR THE PERSON AT THE OTHER END CANNOT HEAR ME WHEN I TALK USING MY DESK PHONE

A The clear dial-tone switch and/or microphone-level setting in the Jabra PRO 9400 base may be set incorrectly. Correct by re-running the desk phone setup wizard. See the section called “Re-running the Setup Wizards” in the user manual for more information.

Q I AM GETTING A BUZZING SOUND IN MY HEADSET.

A If the device has been set up correctly, your telephone may not be fully immune to the radio signals the headset uses. To overcome this problem, move the headset base at least 30 cm away from the telephone. Alternatively, you can reduce the range of your unit by adjusting the settings on the touch screen.

Q I CAN'T HEAR SOUND OR LISTEN TO MUSIC FROM MY PC IN MY HEADSET.

A Please check the following:

- Make sure that the Jabra PRO 9400 base is selected as the current audio device both in the Windows sound control panel and in the application you are using.
- Make sure the audio link to the PC is open (e.g., by right-clicking on the Jabra Device Service icon in the Windows notification area on your PC).
- Make sure softphone is enabled in Jabra PC Suite.

Q I HAVE MOVED TO A NEW DESK AT WORK. IS IT POSSIBLE TO PUT MY HEADSET ON ANOTHER JABRA PRO 9400 BASE?

A Yes. Just place your headset in the cradle on the new Jabra PRO 9400 base. The two devices will pair and connect automatically.

Q WHEN I TRY TO MAKE A CALL ON MY DESK PHONE, THE GN1000 RHL LIFTS, BUT THE CALL IS NOT CONNECTED.

A The GN1000 cannot be used in conjunction with a headset port. Make sure that the Jabra PRO 9400 base is connected to your desk phone's handset port and not its headset port (if it has one).

Q IS IT POSSIBLE TO AUTOMATE CALLING AND ANSWERING ON MY DESK PHONE WITHOUT USING A HANDSET LIFTER?

A Yes, if your desk phone has an electronic hook switch feature. Check with your supplier for compatibility with your phone, and/or consult the support area at www.jabra.com.

Q MY TELEPHONE INCLUDES AN ELECTRONIC HOOK SWITCH FEATURE THAT SHOULD WORK WITH MY HEADSET, BUT I CAN'T MAKE IT FUNCTION.

A Please check your desk phone documentation to see if any special configuration settings or software updates are required. See also the Jabra website for more information, including compatibility and the correct, clear dial tone switch setting – www.jabra.com/PRO9400

Q DOES WI-FI INTERFERE WITH JABRA PRO 9400 IF YOU HAVE THEM IN THE SAME PLACE?

A No, the Jabra PRO 9470 Bluetooth® port uses adaptive frequency hopping, thereby avoiding channels that are blocked by Wi-Fi. To ensure good sound quality, only the free channels are used.

Q IS IT POSSIBLE TO LISTEN IN ON CALLS WITH THE JABRA PRO 9400 SOLUTION?

A The risk of unauthorized access to communication via a Jabra PRO 9400 headset is very limited as 64-bit encryption is used for the data stream.

Q WHAT IS THE RANGE ON THE JABRA PRO 9400 SOLUTION?

A Jabra PRO 9400 supports a maximum range of up to 150m* (base to headset). In practice, you may find the range to be somewhat shorter due to physical obstructions and electromagnetic interference.

The sound in your headset will slowly deteriorate as you move farther from the base. Move back into range and sound quality is restored. If you move all the way out of range while talking, you will lose all sound, but your call will be held open at the base for 60 seconds. This gives you the chance to move back in range. However, after 60 seconds the current call will be terminated. If you remain out of range for a longer time, you may need to re-establish the DECT connection manually when you return (i.e. dock the headset to the base).

Q WHAT ABOUT CONFERENCE CALLS?

A The Jabra PRO 9400 base is able to pair with one primary headset plus an optional and temporary secondary headset. This allows you to share your conversation with another headset user for conference calling.

Q CAN I TURN THE HEADSET OFF TO SAVE POWER WHEN I'M AWAY FROM THE BASE?

A Yes. Press and hold down the headset's multifunction button down for 5 seconds. To turn the headset back on again, simply dock it in its cradle or press the multifunction button. Please note that this power cycle is the equivalent of resetting the headset.

Q WHAT IS THE TALK TIME FOR A JABRA PRO 9400 HEADSET?

A About 8h for wideband talk mode and up to 10h for narrowband talk mode.

Q MY HEADBAND / EARHOOK / NECKBAND IS BROKEN. HOW DO I GET ANOTHER ONE?

A Simply contact your local Jabra supplier and place an order. You can find the part numbers in the section called "Optional Accessories" in the user manual.

Q I CAN'T CONTACT THE DIAL-IN SERVER. WHAT SHOULD I DO?

A Let the touch screen wizard guide you — you can retry the automatic setup or try a manual setup of your desk phone. You can also choose to retry the cable setup. See the section called "Configuring the Jabra PRO 9400 base for your desk phone" in the user manual for more information.

* Range varies according to the environment in which the headset is used

12. GETTING ASSISTANCE

If you are having problems with your headset solution that are not addressed by the information in this manual, then please feel free to contact Jabra technical support at any the locations listed below.

12.1 EUROPE

Web (for the latest support info and online User Manuals):
www.jabra.com

Phone:		E-mail:
Belgique/Belgium	+ 49 (0)8031 2651 72	techsupport@gn.com
Czech Republic	800 522 722	support.cz@gn.com
Danmark	+ 45 45 75 99 99	support.dk@gn.com
Deutschland	+ 49 (0)8031 2651 72	techsupport@gn.com
España	+ 34 916 398 064	info@gnnetcom.es
France	+ 33 (0) 130 589 075	techsupport@gnnetcom.fr
Italia	+ 39 02 5832 8253	tecnico@gn.com
Luxembourg	+ 49 (0)8031 2651 72	techsupport@gn.com
Nederland	+ 49 (0)8031 2651 72	techsupport@gn.com
Norge	+ 47 32 22 74 70	support.no@gn.com
Österreich	+ 49 (0)8031 2651 72	techsupport@gn.com
Poland	+ 48 12 254 40 15 0 801 800 550	support.pl@jabra.com
Russia		sorlov@gn.com darkhipov@gn.com
Suomi	+ 358 9 396 811	support.fi@gn.com
Sverige	+ 46 (0)8 693 09 00	info@jabra.se
United Kingdom	+ 44 (0)1784 220 172	info_uk@jabra.com

12.2 USA AND CANADA

Web (for the latest support info and online User Manuals):
www.jabra.com

E-mail Technical support: techsupp@jabra.com

E-mail Information: info@jabra.com

Phone (toll-free in USA and Canada):

Canada	1-800-489-4199
USA	1-800-826-4656

12.3 ASIA/PACIFIC

Web (for the latest support info and online User Manuals):
www.jabra.com

E-mail Information: support.apac@jabra.com

Phone:

Australia	1-800-083-140 (GN Customer service) 1-800-636-086 (local distributor)
China	+ 86-21-5836 5067
Hong Kong	800-968-265 (Toll free)
Indonesia	001-803-852-7664
Japan	+ 81-3-3242-8572
Malaysia	1800-812-160 (Tollfree)
New Zealand	0800-447-982 (Toll free)
Singapore	800-860-0019 (Toll free)
Taiwan	0080-186-3013 (Toll free)
India	000-800-852-1185(Tollfree)
Philippine	+ 63-2-2424806

13. TECHNICAL SPECIFICATIONS

13.1 ALL JABRA PRO HEADSETS

Operating environment:

-10°C to +55°C (0°C to +40°C when charging); up to 98% humidity

Call control:

multifunction button supporting answer call, end call, voice-activated dialing, reject call, redial, swap held calls; docking operations can also answer and end calls

Volume control and microphone mute:

controlled via touch-panel on headset

Visual indicator:

multi-color LED indicates call status, battery level, pairing status and other events

Audio indicators:

Tones to indicate incoming calls, low battery, volume level, microphone muting and other events; target phone can be indicated by English voice tag or target-specific melody

Sound quality:

DSP noise reduction; echo cancellation; tone control; narrowband and wideband audio (selectable per phone type)

Firmware update:

Downloadable from PC

Recharge:

While docked in the Jabra PRO base

PC-based configuration:

All settings can be stored and loaded from a PC for backup and mass deployment

Wireless standard:

DECT and DECT 6.0 (CAT - iq)

DECT range:

up to 150m from Jabra PRO base to headset

DECT Frequencies:

US DECT: 1.88 - 1.90

EU DECT: 1.92 - 1.93

Wearing styles:

Ear hook or headband (neckband is available as an accessory)

Boom style:

Midi

Microphone:

Single noise-cancelling microphone

13.2 JABRA PRO MIDI HEADSET

The Jabra PRO Midi Headset is included with Jabra PRO 9470. In addition to the specifications listed above, this headset provides the following:

Wearing styles:

Ear hook, headband, neckband (either included or available as accessories, depending on model)

Speakers:

1

Boom style:

Midi

Microphone:

Dual Noise Blackout™ microphones

13.3 JABRA PRO FLEX HEADSET

Wearing styles:

Ear hook, headband, neckband (either included or available as accessories, depending on model)

Speakers:

1

Boom style:

Flex

Microphone:

Single noise-cancelling microphone

13.4 JABRA PRO 9460-DUO HEADSET

Wearing style:

headband

Speakers:

2 (dual mono)

Boom style:

flex

Microphone:

single noise-cancelling microphone

13.5 HEADSET HEARING PROTECTION

All Jabra PRO 9460 and 9470 headsets can be configured to provide any of several levels of protection, depending on how long you use the headset each day. A specific setting may be required in some jurisdictions. See also *Section 2.2: Protecting your Hearing with SafeTone™*.

All four IntelliTone™ levels above zero meet and exceed de facto global protection levels, and are compliant with NIOSH standards and EU health and safety codes of 85 dB(A). They are also compliant with Directive 2003/10/EC of the European Parliament and Council of 6 February 2003.

The TT4 protection level is compliant with pertinent Australian recommendation.

13.6 HEADSET BATTERY

All Jabra PRO headsets use the same type of battery, which has the following specifications:

Battery type:

Lithium Ion

Battery capacity:

315 mA/h, typical

Battery talk time:

Up to 8h

Battery lifetime:

Minimum 500 charge cycles (over 3 years when used for 8 hours a day)

Battery standby time:

At least 100h

Operating temperature range:

at -10°C to +60°C

Note: The headset features a temperature-dependant charging algorithm that prevents the battery from being charged during extreme temperatures (about 0 to 45 deg. C)

Battery charge time:

2 hours

Shelf life:

Holds a charge for at least 6 months in the off state before recharge is required

Replacement:

Battery lifetime is usually about 3 years with regular use. Contact your Jabra dealer for details about how to order a battery-replacement kit for your headset

13.7 MATERIALS AND ALLERGIES

The headband attachment is made of stainless steel and does not have a nickel-coated surface. Nickel release from the headband is 0.02 µg/cm²/week, which is well below the 0.50 µg/cm²/week limit established by EU Directive 94/27/EF. The stainless steel alloy was tested for nickel release in accordance with the European standard EN 1811:1998.

Other wearing-style attachments are made of plastic and contain no known allergens.

The leatherette ear cushions do not contain vinyl.

The products contain no nickel, chrome or natural rubber that can come into contact with users' skin.

13.8 TOUCHSCREEN BASE

All Jabra PRO bases described in this manual meet the following specifications (model differences are noted where relevant). The 9470 base also supports Bluetooth, which is specified in the next section.

Dimensions:

160mm x 94mm x 82mm

Wireless standard:

DECT and DECT 6.0 (CAT - iq)

DECT range:

Up to 150m from base to headset

Operating environment:

-10°C to +55°C (0°C to +40°C when charging); up to 98% humidity

Touchscreen:

2.4" touch-sensitive TFT; Q-VGA resolution

Touchscreen functions:

Detailed call handling, system configuration and setup wizard; can fetch and redial from mobile-phone call history (incoming, outgoing and missed calls)

Recharge cradle:

Fits supplied Jabra PRO headset; features magnetic coupling; easily replaced to accommodate future headset upgrades

Audio:

Built-in speaker can provide ring tones and/or audio feedback for touchscreen operation

Audio bandwidth:

Narrowband or wideband

Desk phone connections:

RJ-11 for handset, RJ-11 for phone body (or headset port), RJ-45 for AUX (for electronic hookswitch or GN1000 handset lifter)

Clear dial-tone switch and microphone calibration:

Software controlled and adjusted automatically by calling your local Jabra test server

Electronic-hookswitch standards:

GN1000, Cisco, DHSG, MSH, (each requires additional cabling and/or equipment available separately; more may become available in future and added via firmware upgrade)

Online indicator:

2,5 mm jack connector (available as an accessory)

PC connector:

Mini USB

Firmware update:

Downloadable from PC; also can include language packs for touchscreen display

PC-based configuration:

All settings can be stored and loaded from a PC for backup and mass deployment

Softphone support:

Full call handling for Skype, Microsoft Office Communicator and Cisco IP Communicator; other softphones see headset as a standard sound card; support for additional softphones may be added via driver updates for the PC. For the latest updates, see jabra.com/pcsuite on the web

Theft protection:

Kensington Security Slot standard

This product contains font software programs which generate human readable typeface designs ("Font Software") on base display. The Font Software family is Frutiger® Next licensed to GN Netcom by Linotype®.

13.9 JABRA PRO 9470 BASE BLUETOOTH SUPPORT

In addition to the common specifications listed above, the Jabra PRO 9470 Base also includes Bluetooth support with the following specifications:

Bluetooth version:

BT 2.0 Class 2

Bluetooth range:

Up to 10m (Class 2)

Bluetooth profiles:

Headset profile (HSP 1.1), hands-free profile (HFP 1.5), device-identification profile (DIP 1.3), phone-book access profile (PBAP 1.0)

Bluetooth pairing table:

1 trusted device (headset)

Simultaneous Bluetooth connections:

1 (headset)

13.10 PRODUCT DISPOSAL

Please dispose of the headset according to local regulations and recycle when possible. Do not dispose as household waste. Do not dispose of the headset in a fire as the battery may explode. Batteries may also explode if damaged.

13.11 CERTIFICATIONS AND SAFETY APPROVALS

CE

This product is CE marked according to the provisions of the R & TTE Directive (99/5/EC). Hereby, GN declares that this product is in compliance with the essential requirements and other relevant provisions of Directive 1999/5/EC. For further information, please consult <http://www.jabra.com>.

Within the EU, this device is intended for use in Austria, Belgium, Cyprus, Czech Republic, Denmark, Estonia, Finland, France, Germany, Greece, Hungary, Ireland, Italy, Latvia, Lithuania, Luxembourg, Malta, Poland, Portugal, Slovakia, Slovenia, Spain, Sweden, The Netherlands, United Kingdom, and within EFTA in Iceland, Norway and Switzerland.

FCC

This device complies with part 15 of the FCC Rules. Operation is subject to the following two conditions: (1) This device may not cause harmful interference, and (2) this device must accept any interference received, including interference that may cause undesired operation.

Users are not permitted to make changes or modify the device in any way. Changes or modifications not expressly approved by Jabra will void the user's authority to operate the equipment.

This equipment has been tested and found to comply with the limits for a Class B digital device, pursuant to part 15 of the FCC Rules. These limits are designed to provide reasonable protection against harmful interference in a residential installation. This equipment generates, uses and can radiate radio frequency energy and, if not installed and used in accordance with the instructions, may cause harmful interference to radio communications. However, there is no guarantee that interference will not occur in a particular installation. If this equipment does cause harmful interference to radio or television reception, which can be determined by turning the equipment off and on, the user is encouraged to try to correct the interference by one or more of the following measures:

- Reorient or relocate the receiving antenna.
- Increase the separation between the equipment and receiver.
- Connect the equipment into an outlet on a circuit different from that to which the receiver is connected.
- Consult the dealer or an experienced radio/TV technician for help.

The user must place the base 8" (20 cm) or more from any personnel in order to comply with FCC RF exposure requirements.

Industry Canada

Operation is subject to the following two conditions: (1) This device may not cause interference and (2) This device must accept any interference, including interference that may cause undesired operation of the device. The term "IC:" before the certification/registration number only signifies that registration was performed based on a Declaration of Conformity indicating that Industry Canada technical specifications were met. It does not imply that Industry Canada approved the equipment.

Patents and design registration pending international

14. GLOSSARY

Bluetooth

An open wireless protocol for exchanging data over short distances from fixed and mobile devices, such as mobile phones and headsets. It is primarily designed for low power consumption, with a short range (power-class-dependent: 1 meter, 10 meters, 100 meters) based on low-cost transceiver microchips in each device. Bluetooth makes it possible for these devices to communicate with each other when they are in range. Because the devices use a radio (broadcast) communications system, they do not have to be in line of sight of each other.

DECT

(Digital Enhanced Cordless Telecommunications). DECT is an ETSI standard for digital portable phones (cordless home telephones), commonly used for domestic or corporate purposes. DECT can also be used for wireless broadband data transfers.

Dongle

A small piece of hardware that connects to a computer, typically portable like a USB Pen. Although earlier use of dongles was to authenticate a piece of software, the word dongle is now widely used to refer to a broadband wireless adapter. In connection with Jabra® products, dongle is another term for USB Bluetooth adapter (see below).

Dual microphones

Dual microphones increase the amount of captured sound data, enabling the device to more intelligently filter the background noise. DSP technology then uses the microphones to determine the direction of the sound or noise based on the sound delay between the two microphones, making it possible to filter out unwanted noise. The DSP also uses the dual microphone system to significantly reduce stationary noise. To eliminate the “tinny” effect, sound emanating from the mouth is enhanced and transmitted while all other sound is classified as noise and is filtered out.

DSP

Digital Signal Processing.

Firmware

The software that is embedded in a hardware device, for example any Jabra headset or base.

Hookswitch

The control mechanism that answers and hangs up a call on a telephone. When you place the handset in the telephone cradle, it depresses the switch hook's button and hangs up (puts the phone “on hook”).

Jabra® PC Suite

A collection of PC programs that enable you to configure your Jabra device, update its firmware and control supported softphones using the buttons on your headset. The Jabra PC Suite also includes drivers for various softphones on the market.

Narrowband audio

Narrowband refers to a situation in radio communications where the bandwidth of the message does not significantly exceed the channel's coherence bandwidth. It is a common misconception that narrowband refers to a channel which occupies only a “small” amount of space on the radio spectrum. Narrowband can also be used with the audio spectrum to describe sounds which occupy a narrow range of frequencies. In telephony, narrowband is usually considered to cover frequencies 300–3400 Hz.

Noise Blackout™

Developed by GN Netcom engineers, Noise Blackout™ applies a directional principle to noise cancellation, reducing only surrounding noise and not distorting the user's voice. The technology uses dual microphones to capture sound, intelligently filtering background noise only. Other noise cancellation headsets cancel noise by cutting away audio frequency and reducing sound quality. Used together with advanced DSP technology and Peakstop™ (audio shock protection) that monitors incoming audio volume, sound is balanced to filter out background noise, leaving both sides of the call with a natural sounding voice quality.

Pairing

Creates a unique and encrypted link between two Bluetooth devices and enables them to communicate with each other. Bluetooth devices will not communicate if they have not been paired.

Softphone

A piece of software for making telephone calls over the Internet using a general purpose computer, rather than using dedicated hardware. Often a softphone is designed to behave like a traditional telephone, sometimes appearing as an image of a phone, with a display panel and buttons with which the user can interact. A softphone is usually used with a headset connected to the sound card of the PC, or with a USB phone.

Softphone driver

Establishes a control link between a softphone and your Jabra headset, so you can answer and end, mute and un-mute, and hold and resume calls using the buttons on your headset. The actual call control functions available from your headset depend on the capabilities of the softphone and the Jabra headset model.

USB Bluetooth adapter

Sometimes also called a dongle (see above). A PC must have a Bluetooth adapter in order to communicate with other Bluetooth devices. While some desktop computers and most recent laptops come with a built-in Bluetooth adapter, others require an external one. Bluetooth allows multiple devices to communicate with a computer over a single adapter.

Wideband audio

Sometimes also called HD Audio, this is an audio technology used in telephony. It extends the frequency range of sound travelling over telephone lines, resulting in higher quality voice transmission. The range of the human voice extends from 80 hertz to 14,000 hertz. Traditional, or narrowband telephone calls, limit audio frequencies to the range of 300 to 3400 hertz. Wideband audio eliminates the majority of bandwidth limitations and transmits in the range of 30 hertz to 7000 hertz or higher.



Dispose of the product according to local standards and regulations.

www.jabra.com/weee

Jabra®

A BRAND BY

GN Netcom

© 2009 GN Netcom A/S. All rights reserved. Jabra® is a registered trademark of GN Netcom A/S. All other trademarks included herein are the property of their respective owners. The Bluetooth® word mark and logos are owned by the Bluetooth SIG, Inc. and any use of such marks by GN Netcom A/S is under license. (Design and specifications subject to change without notice).

MADE IN CHINA
TYPE: 9400HS/BS



www.jabra.com