



GAI-TRONICS

A division of Hubbell Limited

GAI-Tronics Telephony

PHP400

Hands-Free, Vandal Resistant, Disability-Friendly Telephone



The PHP400 Help Point is a rugged, public access hands-free telephone housed in a white enclosure.

The units are compact (400mm diameter, 88mm deep) and have the same fixing requirements as other GAI-Tronics telephones.

The Help Point telephones are vandal and weather resistant, providing hands-free loudspeaking communications for any public area.

The design of the unit takes into consideration the requirements of DDA (Disability Discrimination Act).

Connectivity options are:

SMART Analogue

The unit provides basic telephone functions and can be connected to any standard two-wire telephone line, including FXS ports, analogue PABX lines and PSTN.

Self Monitoring And Reporting Telephone can be integrated with GAI-Tronics' TMA monitoring and maintenance software and/or GAI-Tronics CMA call centre. SMART gives advanced features including remote programming, fault monitoring and call logging.

GSM

The GSM version has dual band 900/1800 MHz. It accepts any standard SIM card and has cable connection to an external aerial.

- **SMART Analogue, GSM and VoIP-SIP options**
- **Large, vandal resistant metal buttons, palm operable**
- **Raised text button legends with Braille**
- **Integral Induction Loop facility for hearing impaired**
- **Audio-visual ring indication**
- **Emergency override**
- **Hands free operation**
- **Local PA**
- **Robust and weather resistant: IP65**
- **1 or 2 button autodial options with remote programming**
- **Suitable for pole mounting to a single PSTN post or surface mounting, simple installation**
- **400mm diameter**
- **NETWORK RAIL approved**



Voice over IP (SIP protocol)

For connection to a VoIP enabled network, GAI-Tronics VoIP-SIP telephones offer direct connection to LAN or WAN via RJ45 connector, including Power-Over-Ethernet (PoE) as standard. GAI-Tronics VoIP-SIP phones offer a wealth of additional features including real-time reporting via Syslog, and can be configured by web browser.

2 button autodialler

Buttons labelled "Information" and "Emergency". Each button can be programmed with a number up to 24 digits.



Pressing the Emergency button will override an information call.

1 button autodialler

Can be configured to dial a stored number or as a 'hotline', where the exchange routes the call.



As well as the standard Help Point range, GAI-Tronics can supply specials to order with customised options.

Hands-Free, Vandal Resistant, Disability-Friendly Telephone

TECHNICAL SPECIFICATIONS

Casing Material mild steel, zinc coated, powder coat finish - white. Call for other options.

Disability Features

Raised text and Braille legend to button; Integral induction loop

Keypad Raised, stainless steel, vandal resistant pushbutton (palm operable)

Temperatures

Operating temperature: -20 to +60° C

Storing: -40° C to +70° C

Lightning / Transients

Protection to ITU-T k.21 enhanced levels

Weather Resistance IP65

Humidity 95% RH non condensing

Weight: 6.5kg

ANALOGUE / GSM

Speech

Voice-switched (VOX) semi-duplex operation

Call timeout programmable from 1 to 42 minutes.

Remote switch-off capability

Dialling

Autodial keypad single-press switch-on-and-dial

24 digits maximum with embedded Recall, Pause, Pulse & Tone characters

Ringing

Dual tone ringing through loudspeaker >75 dB @ 1m REN 1

Power Supply 230Vac @ 650mA max

Memory Retention (autodiallers) E² Prom - 10 year life

Options:

Remote programming

Auto-dial numbers, time-out and dial mode can be programmed over the phone line either from a tone phone or from monitoring software (TMA).

Configuration

Remotely programmable via TMA

Remote monitoring

Remote health-check and fault reporting, either on a call-in or polled basis. TMA required.

Call Logging

Records call time, duration and auto-dial number used. TMA required.

VOICE OVER IP - SIP

Connection type

SIP to RFC3261

Ethernet connection via RJ45 socket inside enclosure

Power supply

Power requirement: 230Vac @ 650mA max (typ 50mA in idle state), or optional 48Vdc @ 1A max

Mains connection via screw terminals inside enclosure

Cable access: single 20mm hole to both top and bottom of enclosure (blanking plugs supplied).

Call set-up Protocol

Session Initiation Protocol (SIP) (RFC 3261) only

Configuration

Remote configuration via web pages, serial port, Telnet or configuration file

Static IP address provisioning or DHCP

External I/O

4 auxilliary inputs, 2 isolated relay outputs (1 capable of switching 230Vac)

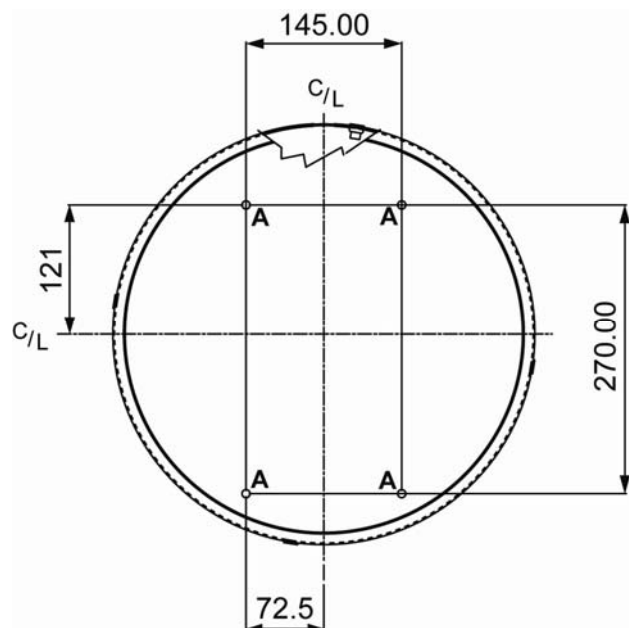
Monitoring and reporting

Remote alarms via syslog or email

DIMENSIONS

405mm diameter x 88mm depth (button protrudes a further 10mm from front panel)

Mounting centres: 145 x 270mm



APPROVALS



This mark indicates compliance with the:
Radio & Telecommunications Terminal Equipment Directive
1999/5/EC (R&TTE)

2002/96/EC - Waste Electrical and Electronic Equipment
(WEEE) Directive

2002/95/EC - Restriction of the use of certain hazardous
substances in electrical and electronic equipment (RoHS)

Tested to CTR21



Network Rail Approved

For specific country approval,
please call

ORDER INFORMATION

For order codes and details, please contact

T: 01283 500500, F: 01283 500400, E: sales@gai-tronics.co.uk

OPTIONAL ACCESSORIES

Please ask for Brochure B150 or visit www.gai-tronics.co.uk

